



## Hyde Lane, SW11

£425,000

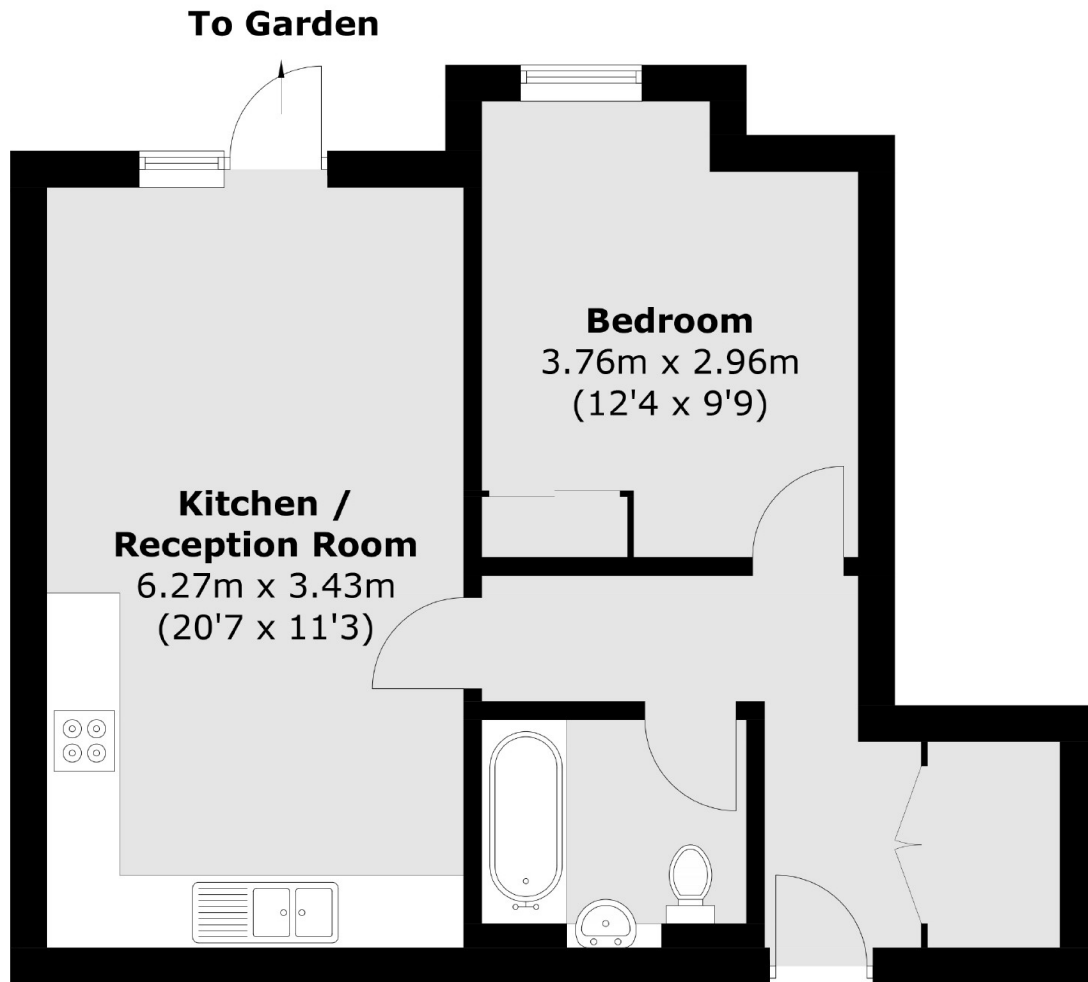
A beautifully presented bright and spacious, modern one double bedroom purpose built apartment with private garden. It has an open plan reception/kitchen with integrated appliances, double bedroom and modern bathroom. The property further benefits from being moments from Battersea Park and is being sold chain free.

Hyde Lane is located close to the the river and opposite Battersea Park, Sloane Square, and Battersea Power Station. Queenstown Road and Battersea Park national rail stations are a short walk away, as is Sloane Square underground station.

### Features

- One Double Bedroom
- Measuring Circa 500 Sq Ft
- Modern Bathroom
- Private Garden
- Superb Location
- Chain Free

# Hyde Lane, London, SW11



## Ground Floor

Total area (approx.): 46.4 sq. m (499.4 sq. ft)

**Dexters**

Northcote Road  
93 St. John's Road  
London  
SW11 1QY  
Sales  
020 7483 6333

Energy Rating: C. We aim to make our particulars both accurate and reliable. However they are not guaranteed; nor do they form part of an offer or contract. If you require clarification on any points then please contact us, especially if you're traveling some distance to view. Please note that appliances and heating systems have not been tested and therefore no warranties can be given as to their good working order.

 **RICS** | Regulated  
Estate Agent  
and Letting Agent

dexters.co.uk