



## Mossbury Road, SW11

£400,000

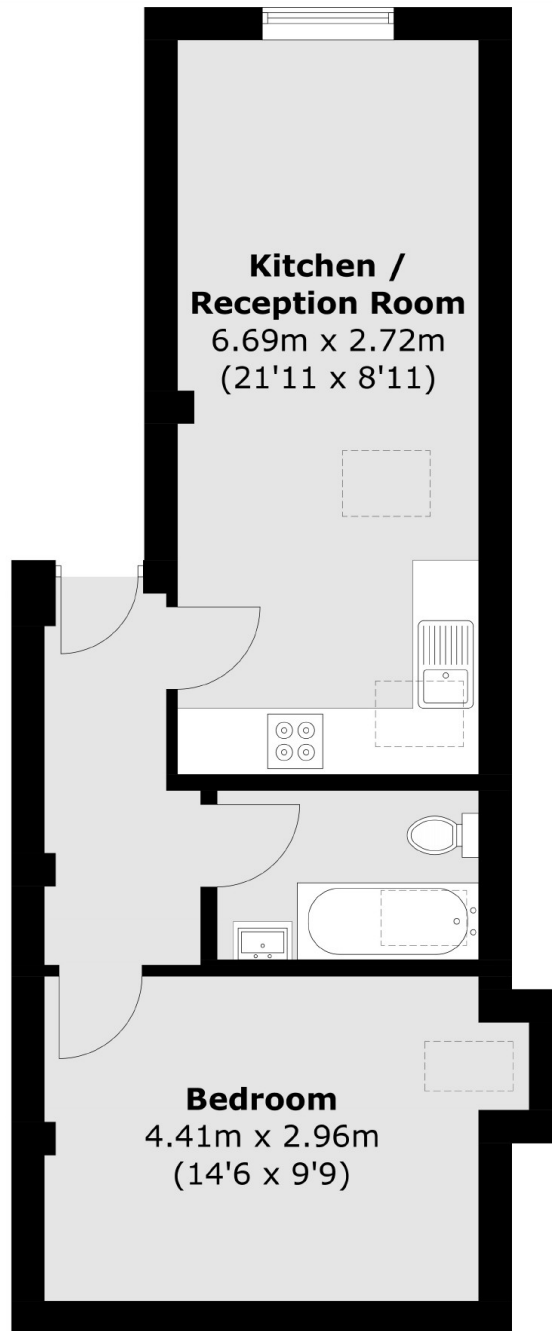
A beautiful one double bedroom top floor apartment. It has an open plan kitchen/reception room and family bathroom. The property is being sold chain free.

Mossbury Road is a sought after street located moments from the green open spaces of Wandsworth Common and close to the eclectic mix of bars, restaurants and boutiques on St. John's Hill & Northcote Road. Clapham Junction Station is just a short stroll away.

### Features

- Top Floor Apartment
- One Double Bedroom
- Open Plan Kitchen/Reception
- Superb Location
- Family Bathroom
- Chain Free

# Mossbury Road, London, SW11



## Fourth Floor

Total area (approx.): 39.8 sq. m (428.4 sq. ft)