



Alma Road, SW18

£925,000

Dexters



Alma Road, SW18

A stunning split level top floor maisonette on the popular Alma Road measuring over 1,345 sq ft. The property comprises an oversized and stunning open plan reception/kitchen/dining room with vaulted ceilings, two large double bedrooms, two bathrooms (both en-suite) & separate WC. The property benefits further from it's own front door and is moments from Wandsworth Town station.

Through the private front door you have a warm and welcoming hallway with vast amounts of storage. Up the stairs you enter into a breathtaking open plan reception, kitchen, dining space which is perfect for entertaining. The reception room has multiple comfortable seating areas and has plenty of additional space for working from home, it also comes with vaulted ceilings and large windows allowing a lot of natural light to spread through the entire space. A WC and utility area complete the accommodation on this floor. Upstairs you have two well proportioned double bedrooms both with en suites and built in storage.

Alma Road is conveniently located for access North of the River and into Central London. Wandsworth Town station and Clapham Junction are a short stroll away. Fulham, Chelsea and the Kings Road are also nearby.

Features

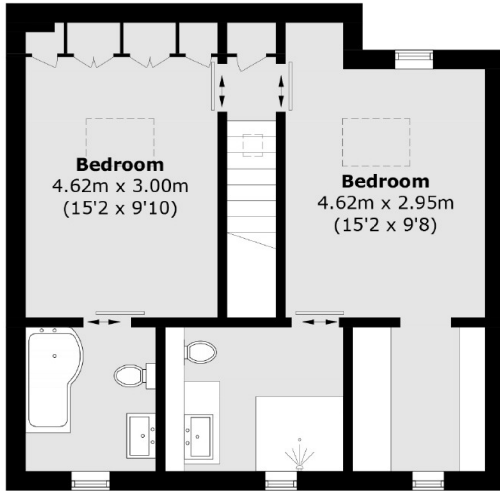
- Measuring Over 1,345 Sq Ft
- Open Plan Reception/Kitchen
- Two Double Bedrooms
- Two Bathrooms
- Own Front Door
- Superb Location



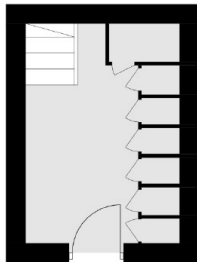




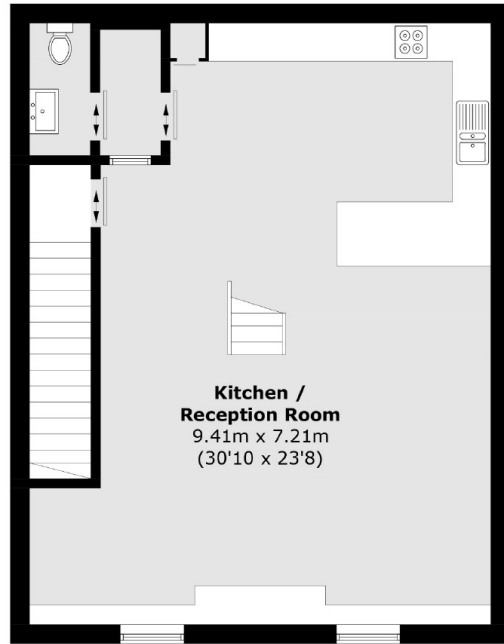
Alma Road, London, SW18



Second Floor



Ground Floor



First Floor

Total area (approx.): 125.0 sq. m (1,345.4 sq. ft)