



## Northcote Road, SW11 £500,000

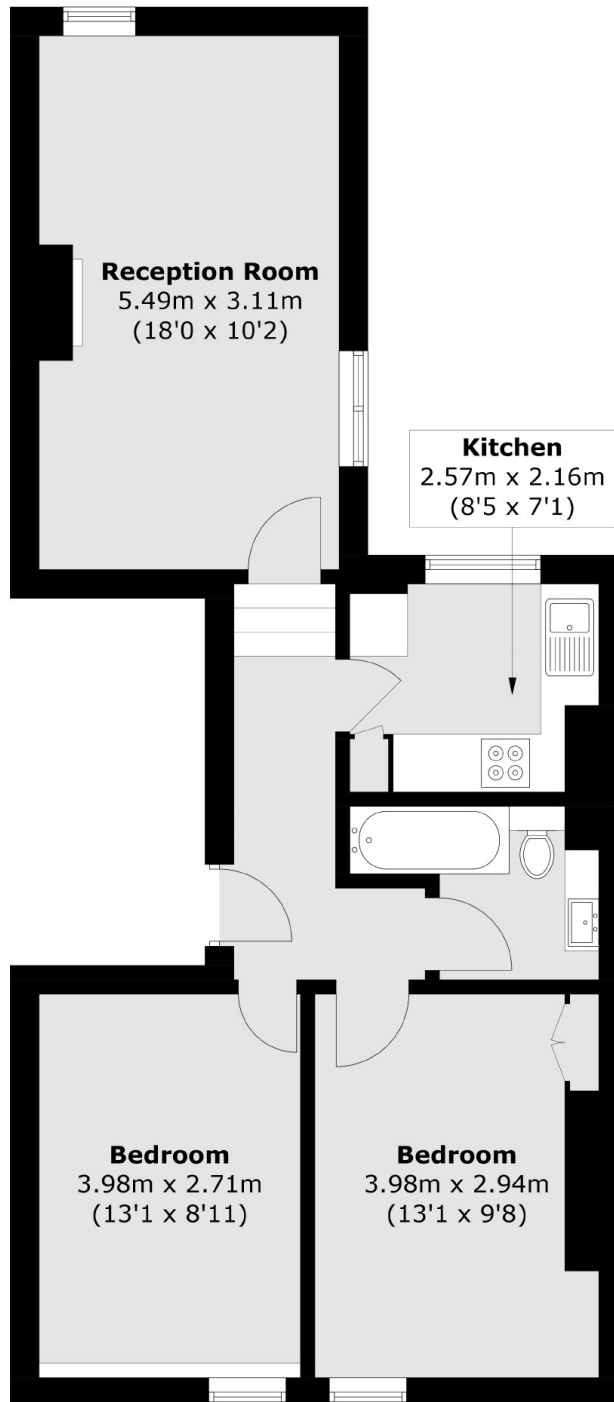
A spacious period conversion presented in excellent order throughout measuring over 600 Sq Ft. Arranged to include a large reception room with high ceilings and vast amounts of natural light, modern kitchen, two double bedrooms and a family bathroom.

Northcote Road is located between Clapham Common and Wandsworth Common and is one of the more sought-after streets between the commons. Clapham Junction, an array of shops, bars and restaurants as well as a selection of great schools are all nearby.

### Features

Period Conversion  
Large Reception Room  
Separate Kitchen  
Two Double Bedrooms  
Measuring Over 600 Sq Ft  
Between The Commons

# Northcote Road, London, SW11



Total area (approx.): 56.7 sq. m (610.3 sq. ft)