



Stott Close, SW18

£400,000

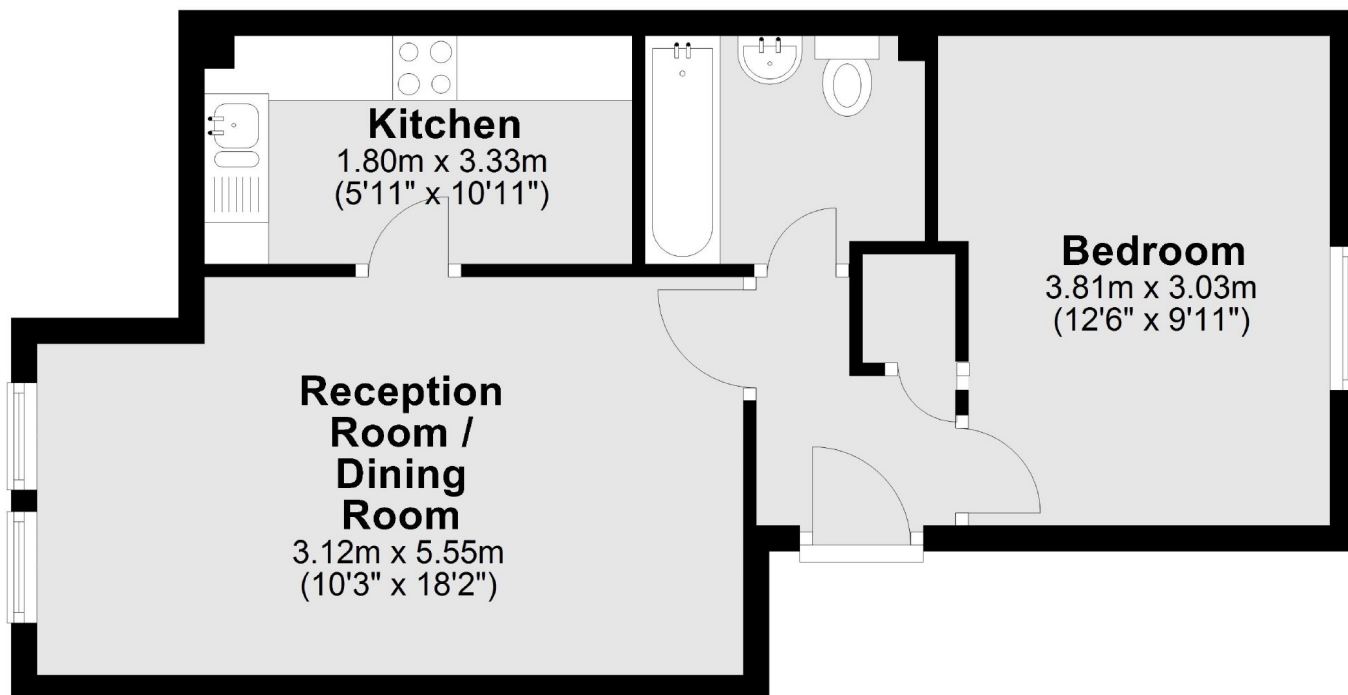
A beautifully presented bright and spacious, modern one double bedroom purpose built apartment with off street parking. It has a large reception room with separate kitchen with integrated appliances, double bedroom and family bathroom. The property is being offered chain free.

Stott Close is a quiet residential cul-de-sac just off John Archer Way which is opposite Wandsworth Common. It is well placed for accessing a wide range of local amenities in Wandsworth, Earlsfield, Northcote Road and Balham with Wandsworth Common station (National Rail) just a short distance away.

Features

- Large Reception Room
- Double Bedroom
- Family Bathroom
- Off Street Parking
- Superb Location
- Chain Free

Stott Close, London, SW18



Total area: approx. 41.6 sq. metres (447.6 sq. feet)