



Lombard Road, SW11

£750,000

A beautifully presented bright and spacious, modern two double bedroom apartment within a prestigious riverside building. It has a large open plan reception kitchen with integrated appliances, two double bedrooms and Jack & Jill bathroom. The property further benefits from a 24 hour concierge, residents gym and breathtaking views of the River Thames.

Lombard Wharf is well situated for excellent transport links with both Clapham Junction and Wandsworth Town Stations only a short walk away. Nearby Clapham and Wandsworth offer an array of retail and leisure facilities and Battersea Park/Power Station are also close by.

Features

- Two Double Bedrooms
- Open Plan Reception/Kitchen
- Private Terrace
- Amazing River Views
- Residents Gym
- 24hr Concierge

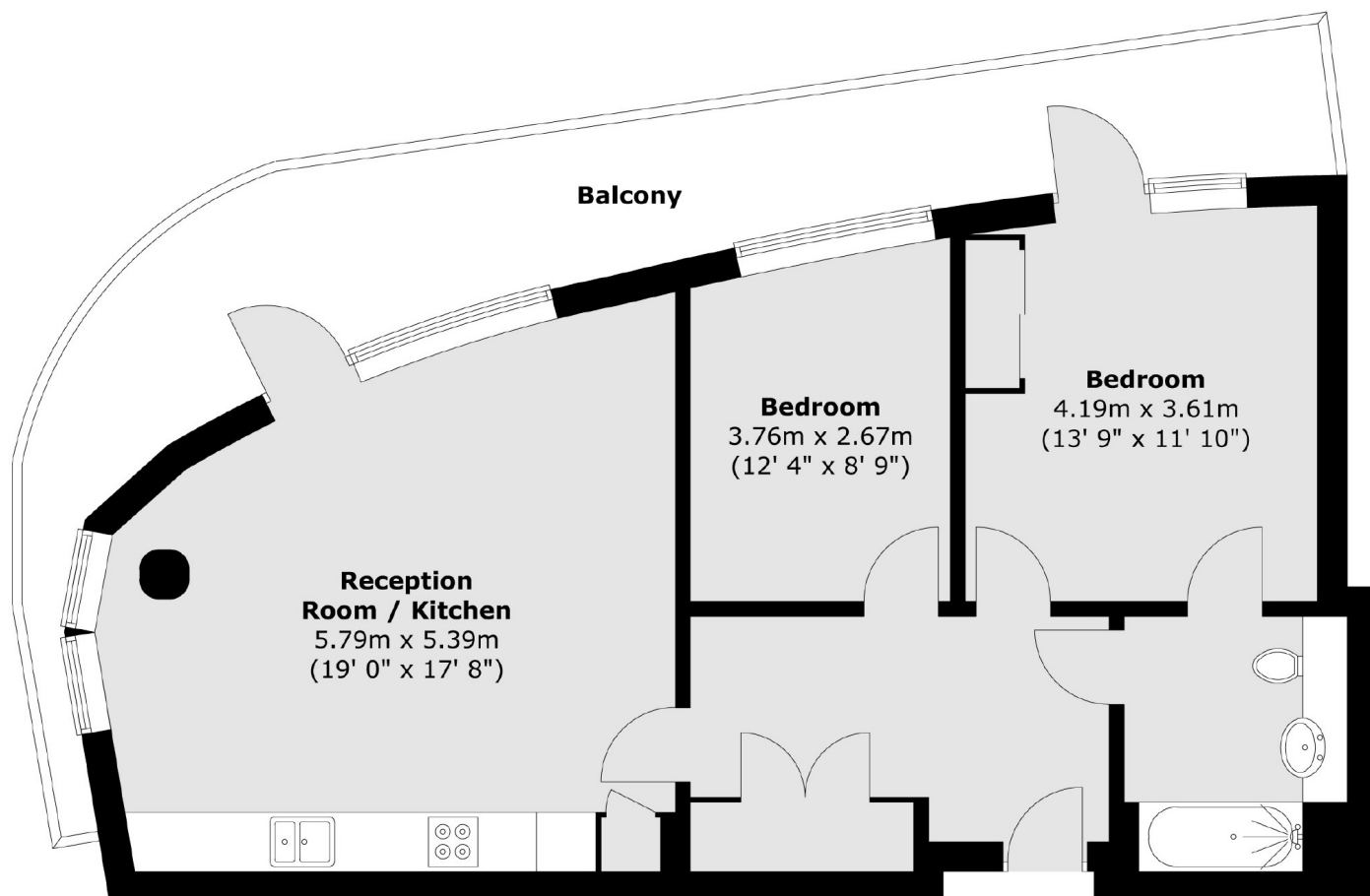


Lombard Road, SW11

Accommodation is made up of a welcoming hallway, large open plan reception room, space for dining, stylish modern kitchen and door to large terrace. There is a sleek Jack & Jill modern bathroom. The block benefits from an excellent 24hr concierge service, residents gym and parking is available nearby.



Lombard Road, London, SW11



Total area (approx.) : 72.5 sq. m (780 sq. ft)
Total balcony area (approx.) : 23.3 sq. m (251 sq. ft)