



## Queenstown Road, SW8

### £800,000

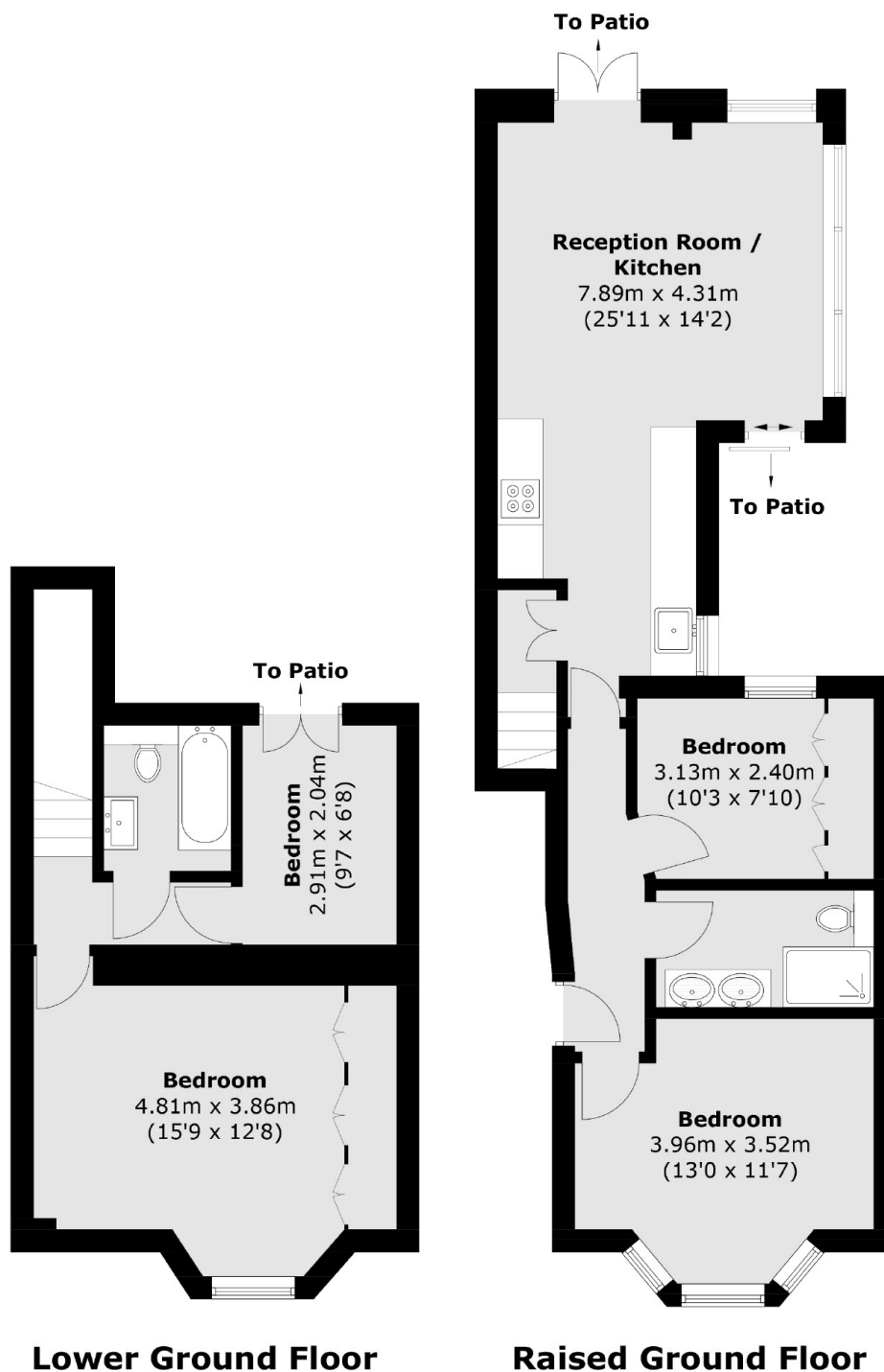
A spacious split level period conversion measuring approx 1,000 Sq Ft. Arranged to include a large reception room, modern kitchen with integrated appliances, a private garden & patio, four bedrooms and two bathrooms. The property benefits from being a short stroll away from the Iconic Battersea Power Station & Battersea Park.

Queenstown Road is in the heart of the Diamond Conservation Area, close to Battersea Power Station, ideally located for Battersea Park, Chelsea and convenient transport links via Battersea Park Road, Queenstown Road, as well as the Northern Line Extension.

### Features

Victorian Conversion  
Large Reception Room  
Four Bedrooms  
Two Bathrooms  
Private Garden & Patio  
Measuring Approx 1,000 Sq Ft

# Queenstown Road, London, SW8



Total area (approx.): 92.6 sq. m (996.8 sq. ft)