



## Amies Street, SW11

£775,000

A spacious top floor period conversion measuring 830 Sq Ft. Arranged to include a large reception room with adjoining modern kitchen, three double bedrooms, two bathrooms & private roof terrace. The property benefits further from owning a share of the freehold and is being sold chain free.

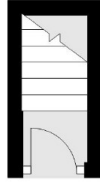
Amies Street is located close to the amenities of Lavender Hill and is a short walk from the shops, restaurants and cafés on the vibrant Northcote Road. Clapham Junction and Clapham Common is also within close proximity.

### Features

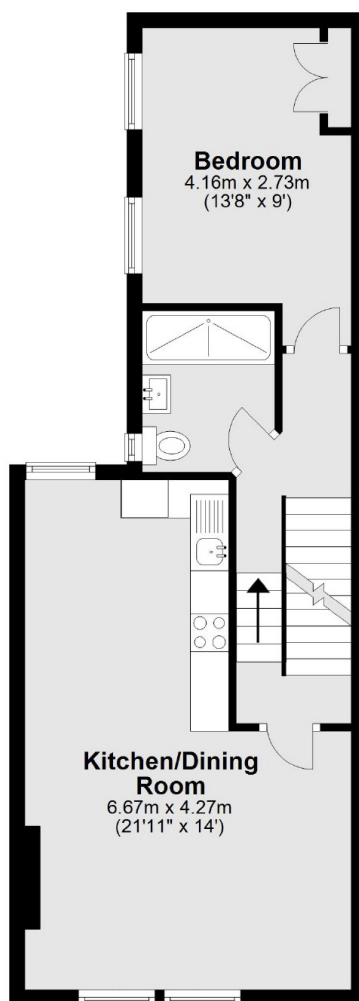
- Three Double Bedrooms
- Two Bathrooms
- Split Level
- Private Roof Terrace
- Share Of Freehold
- Chain Free

# Amies Street, London, SW11

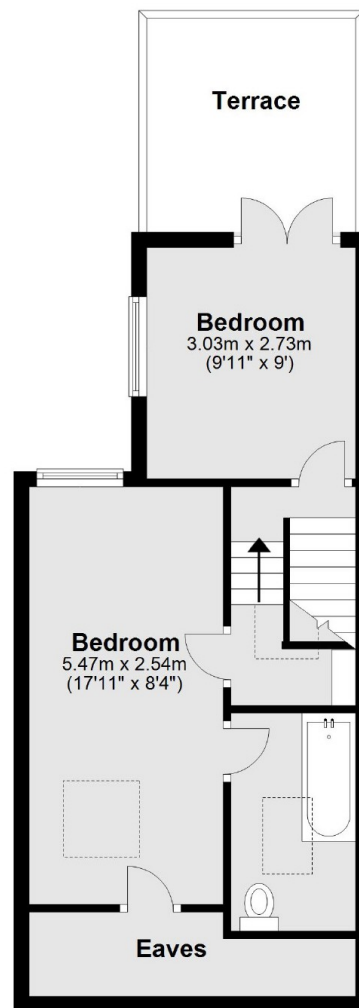
## Ground Floor



## First Floor



## Second Floor



Total area: approx. 77.1 sq. metres (830.0 sq. feet)