



Boutflower Road, SW11

£550,000

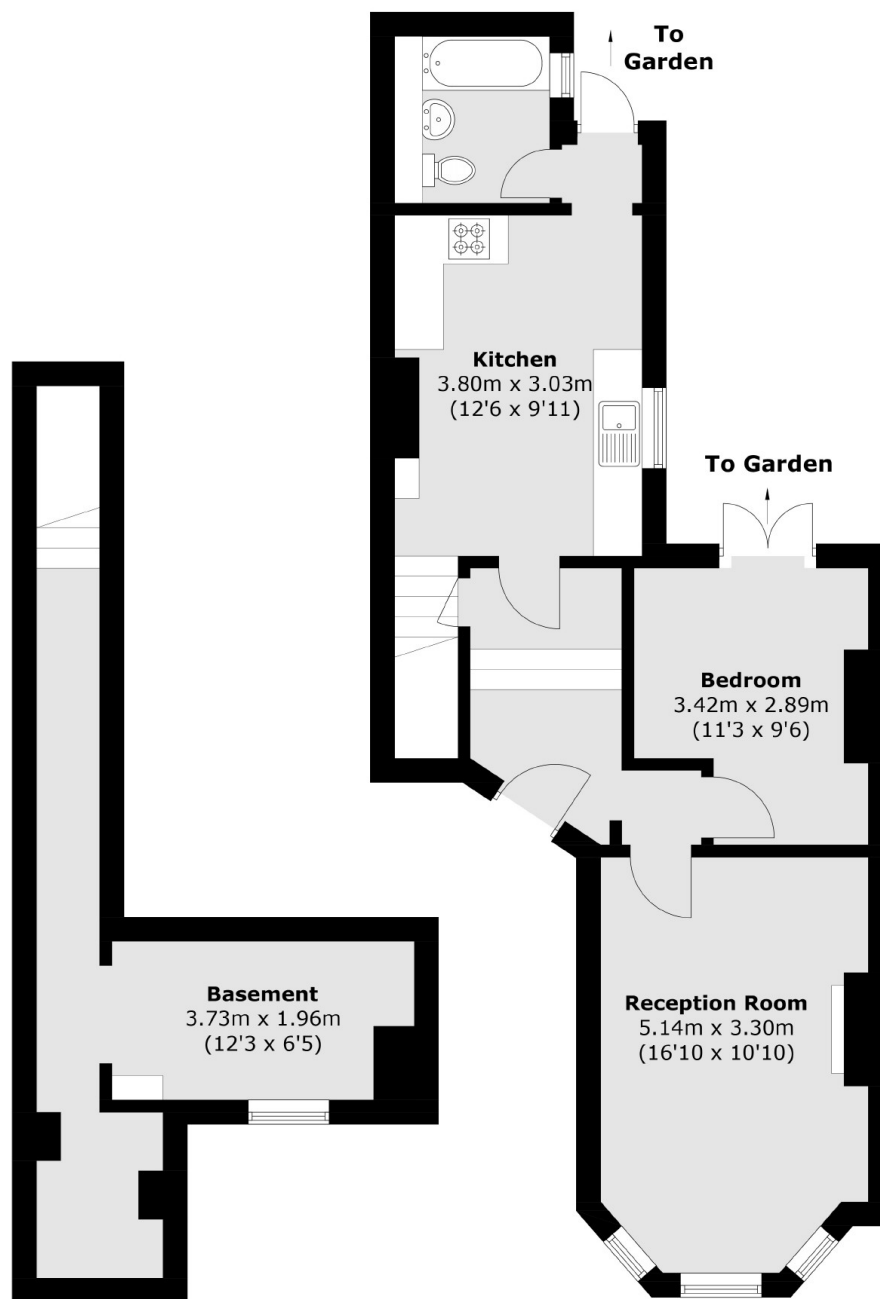
A one double bedroom ground floor garden flat set in a beautiful Victorian building situated on the sought after Boutflower Road. The apartment comprises of a spacious reception room, separate eat-in kitchen, double bedroom and family bathroom. The property benefits further from a private garden, has plenty of storage including the oversized cellar which is also being used as a work from home station & has a share of the freehold.

Boutflower Road is a sought after address located moments from the green open spaces of Wandsworth Common and close to the eclectic mix of bars, restaurants and boutiques on St. John's Hill & Northcote Road. Clapham Junction Station is just a short stroll away.

Features

- Period Conversion
- Large Reception Room
- Eat-In Kitchen
- Private Garden
- Share Of Freehold
- Superb Location

Boutflower Road, London, SW11



Basement

Ground Floor

Total area (approx.): 71.4 sq. m (768.6 sq. ft) (Including Basement)