



**Aslett Street, SW18**

**£850,000**

**Dexters**



## Aslett Street, SW18

A beautiful Victorian maisonette presented in immaculate order throughout measuring over 1,200 sq ft. Comprising a large reception room, an eat-in kitchen, four bedrooms and two bathrooms inc Principle en-suite. The property also benefits from a private South West facing garden.

Upon entering through the private entrance you are greeted by a warm and welcoming hallway. Up the stairs and straight ahead is a modern eat-in kitchen with integrated appliances. The family bathroom is located just behind. The private South West facing garden is through the back door and down the stairs. As you head towards the front of the house and to the left you have a two double bedrooms, one with built in storage. The reception room is located at the front of the property with comfortable seating area, high ceilings and bespoke wooden shutters which boasts charm and character throughout. Up the stairs you have a versatile double bedroom that could be turned into a roof terrace (STP). The spacious Principle bedroom is found in the extended loft space with views over Earlsfield, built in storage & en-suite.

Aslett Street is an extremely popular residential street just off Allfarthing Lane, so ideal for easy access to Earlsfield Train Station and all the shops, bars and other amenities of both Garratt Lane and the Southside Shopping Centre. Wandsworth Common is also nearby.

### Features

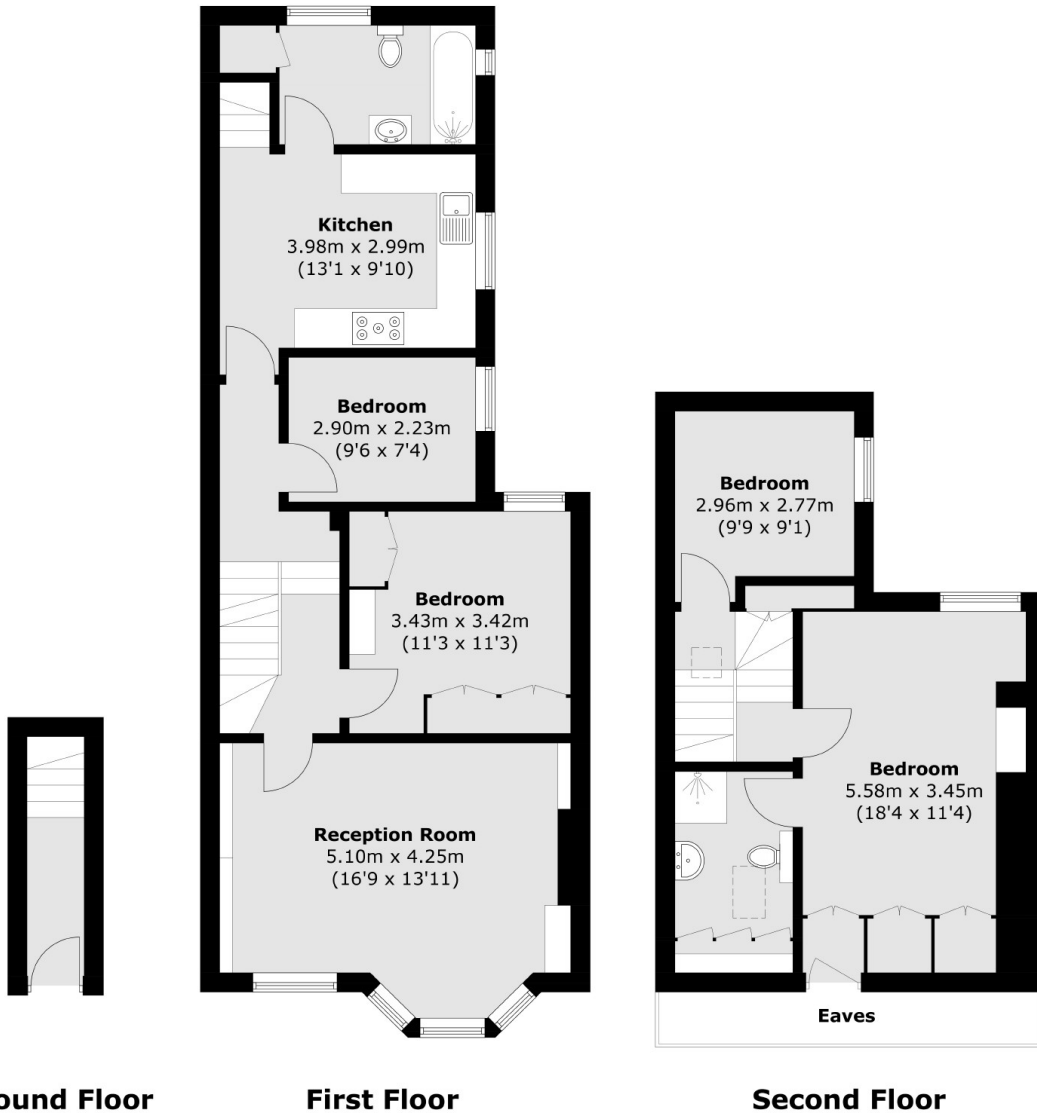
- Victorian Maisonette
- Own Front Door
- Four Bedrooms
- Two Bathrooms
- Private South/West Garden
- Over 1,200 Sq Ft







# Aslett Street, London, SW18



Total area (approx.): 111.9 sq. m (1,204.5 sq. ft)  
(Excluding Eaves)