



Gowrie Road, SW11

£600,000

A spacious split level top floor period conversion measuring 806 Sq Ft. Arranged to include a large reception room, separate kitchen, two double bedrooms and two bathrooms. The property is being sold chain free.

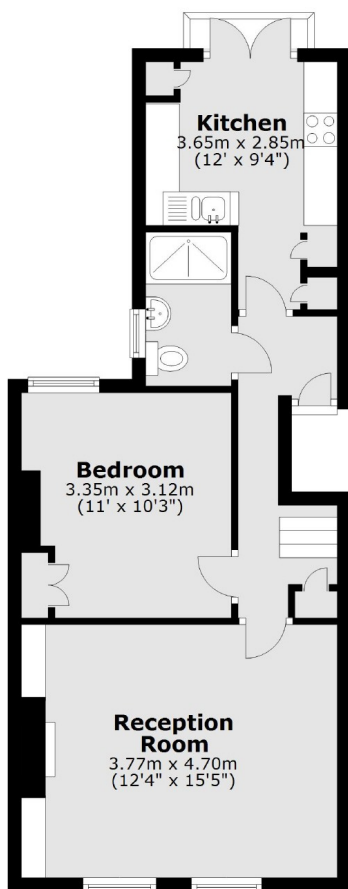
Gowrie Road is a sought after residential street off Clapham Common North Side located near some of the areas best schools. Northcote Road is close by with an array of bars, restaurants and cafés. Transport links can be found at Clapham Common and Clapham Junction alongside local bus routes with access to the beautiful Battersea Park and busy Sloane Square.

Features

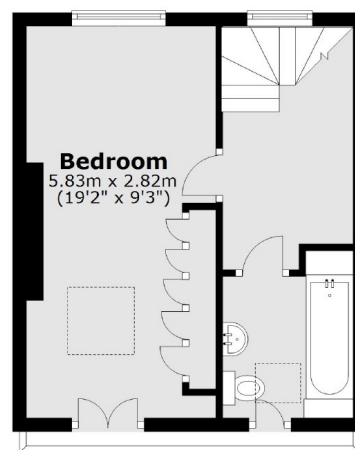
- Victorian Conversion
- Large Reception Room
- Two Double Bedrooms
- Two Bathrooms
- Superb Location
- Chain Free

Gowrie Road, London, SW11

First Floor



Second Floor



Total area: approx. 74.9 sq. metres (806.0 sq. feet)