



Jedburgh Street, SW11

£850,000

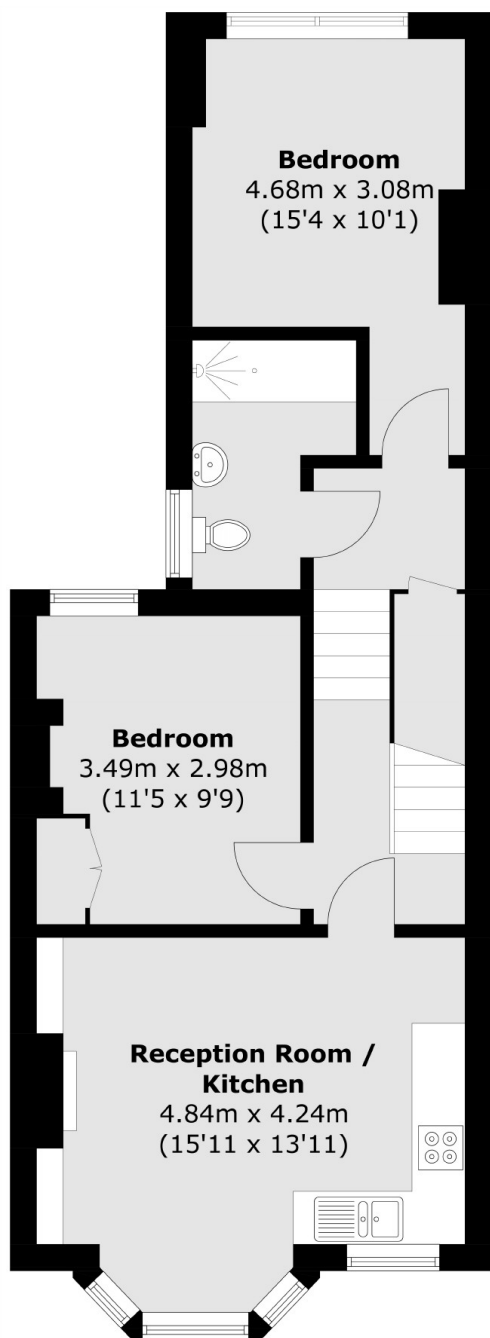
An exceptional four double bedroom Victorian conversion measuring over 1,047 Sq Ft. Comprising a large open plan reception/kitchen, four double bedrooms & three bathrooms including two en-suites. The property is being sold chain free.

Jedburgh Street is a sought-after residential street off Clapham Common North Side located near some of the area's best schools including Eaton House, Parkgate House and Belleville Wix Academy. Clapham Junction station, Clapham Common Underground & Clapham Common itself are a short stroll away.

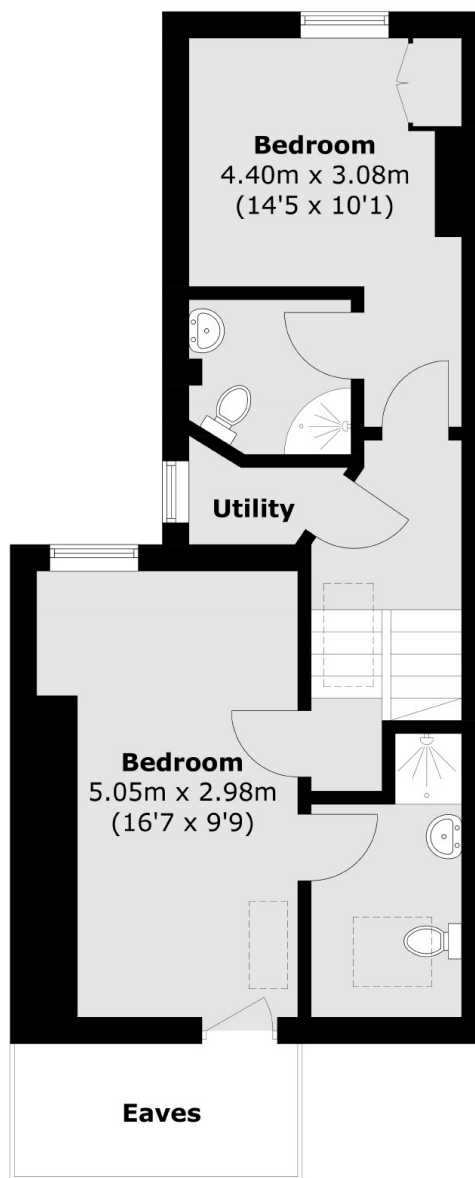
Features

Victorian Conversion
Four Double Bedrooms
Three Bathrooms
Superb Location
Measuring Over 1,047 Sq Ft
Chain Free

Jedburgh Street, London, SW11



First Floor



Second Floor

Total area (approx.): 97.3 sq. m (1,047.2 sq. ft)
(Excluding Eaves)