



Leathwaite Road, SW11

£1,325,000

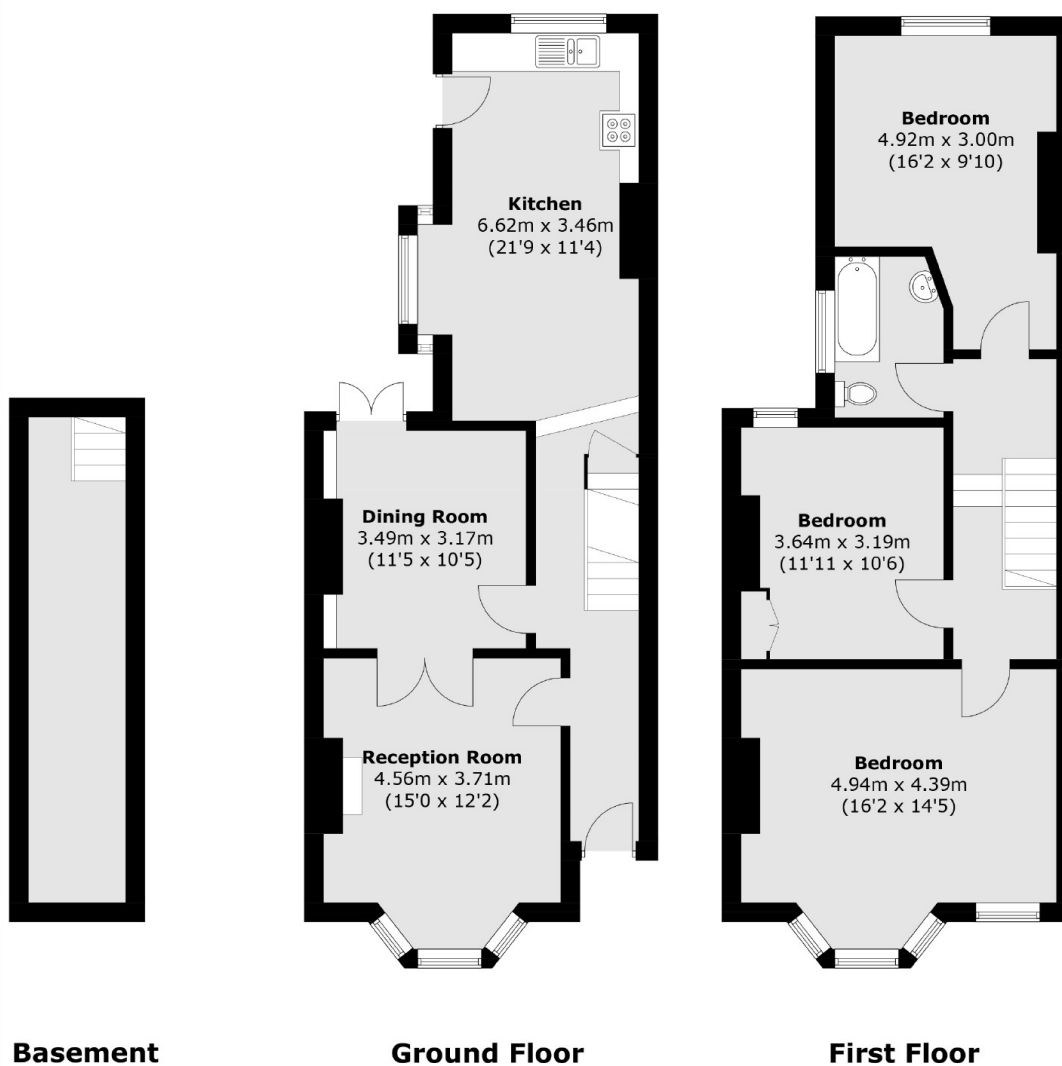
A natural three bedroom Victorian family home located 'Between the Commons'. The property is arranged over two floors with its original layout. On the ground floor there is a reception room, a formal dining room, separate kitchen, cellar & private garden. On the first floor there are three double bedrooms and a family bathroom. The property benefits further from extension potential in the side return and loft (STPP) and is being sold chain free.

Leathwaite Road is located between Clapham Common and Wandsworth Common and is one of the more sought-after streets between the commons. Clapham Junction, an array of shops, bars and restaurants as well as a selection of great schools are all nearby.

Features

Between the Commons
Large Reception Room
Three Double Bedrooms
Family Bathroom
Private Garden
Chain Free

Leathwaite Road, London, SW11



Total area (approx.): 127.0 sq. m (1,367.0 sq. ft)