



Lurline Gardens, SW11

£875,000

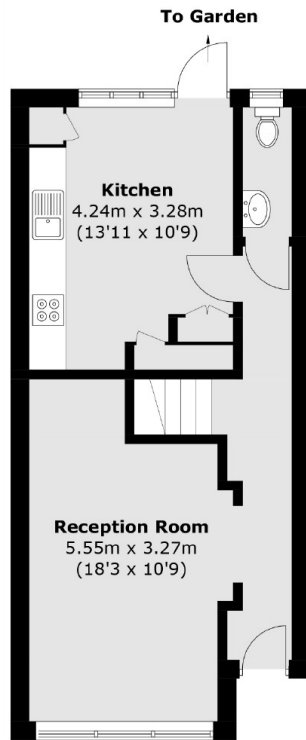
A rarely available freehold home measuring over 1,075 Sq Ft moments from Battersea Park & Battersea Power Station. Comprising a large reception room, separate eat-in kitchen that leads onto a private garden, three double bedrooms & two bathrooms. The property benefits further from rear access into the garden and is being sold chain free.

Lurline Gardens offers excellent transport links to the rest of London. The nearby overground provides access into Waterloo & Victoria with the nearby tube (Northern Line) getting you into the City & Central London. Kings Road, the iconic Battersea Power Station and Battersea Park are moments away.

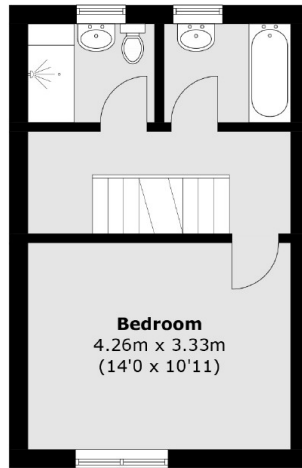
Features

- Freehold House
- Three Double Bedrooms
- Two Bathrooms
- Private Garden & Rear Access
- Superb Location
- Chain Free

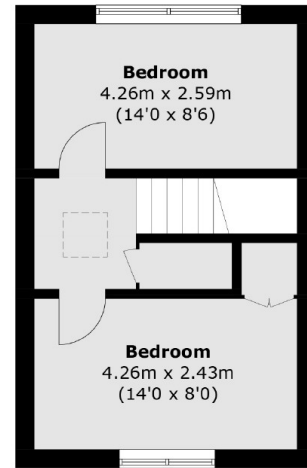
Lurline Gardens, London, SW11



Ground Floor



First Floor



Second Floor

Total area (approx.): 99.9 sq. m (1,075.3 sq. ft)