



Parkgate Road, SW11

£550,000

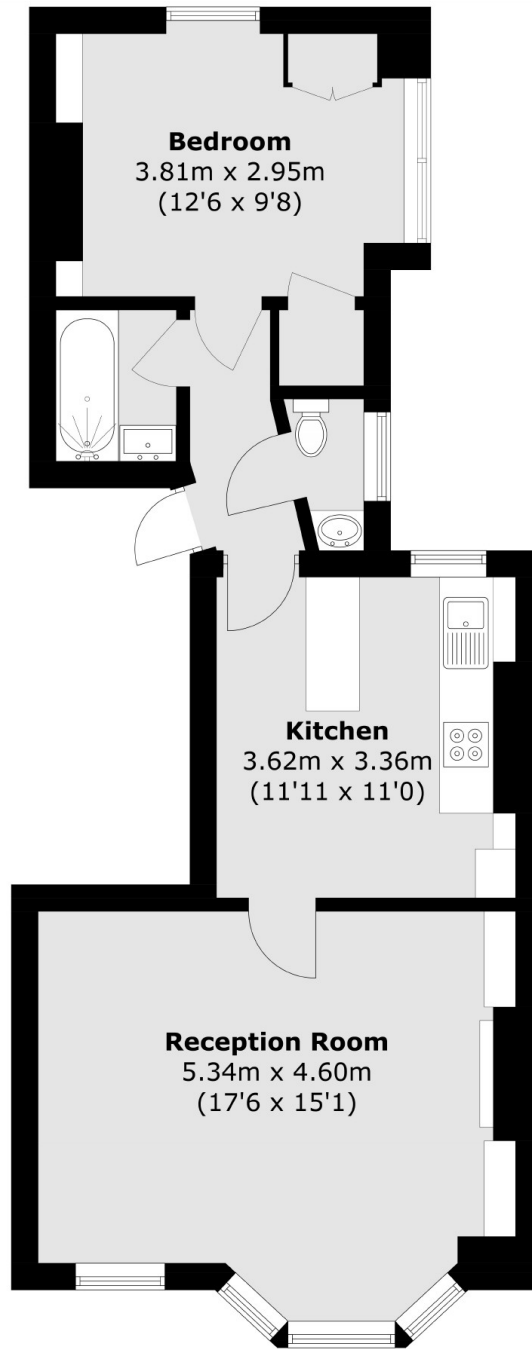
A spacious one double bedroom period conversion occupying the first floor of a beautiful Victorian property, located footsteps away from the entrance to Battersea Park itself and the River Thames.

The property is enviably located on Parkgate Road by Chelsea Bridge and Battersea Park so ideal for easy access into Chelsea and the Kings Road, the park and the Thames Pathway.

Features

- Almost 600 sq ft
- Spacious Reception
- Separate Kitchen
- Double Bedroom
- Great Location
- No Chain

Parkgate Road, London, SW11



Total area (approx.): 54.6 sq. m (587.7 sq. ft)