



Altenburg Gardens, SW11 £425,000

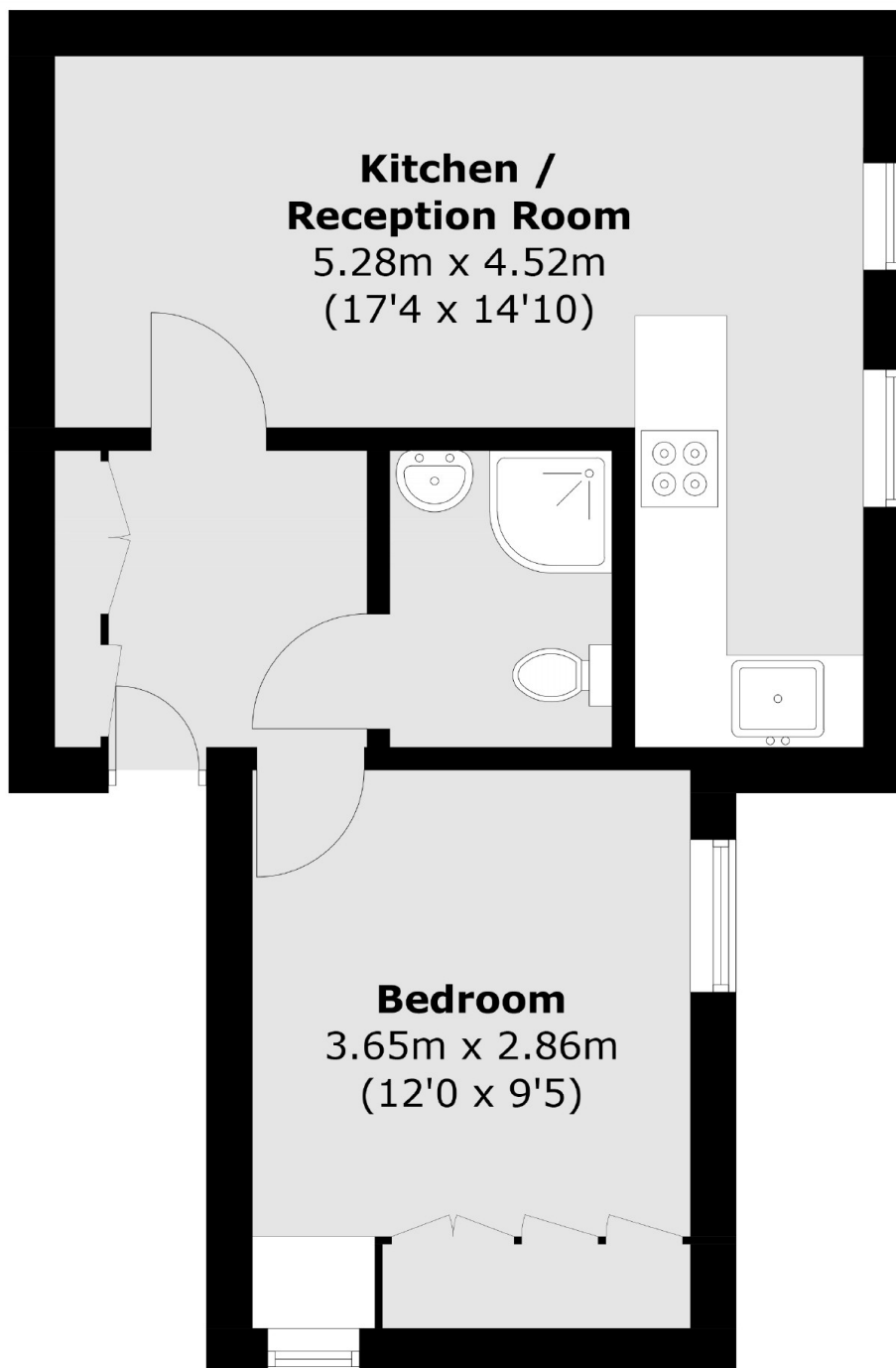
A contemporary apartment situated on the sought after Altenburg Gardens. The apartment comprises of a spacious open plan reception room/kitchen, large double bedroom and modern bathroom. The property benefits further from a communal garden and is moments from Clapham Common.

Altenburg Gardens is a sought after quiet residential street located North of Clapham Common. It is situated in the catchment areas for some of the best schools; Belleville Primary School, Eaton House, Parkgate House, and Belleville Wix Academy and is a short stroll away from both Clapham Junction overground and Clapham Common Tube Station.

Features

- Victorian Conversion
- Double Bedroom
- Open Plan Reception/Kitchen
- Modern Bathroom
- Communal Garden
- Superb Location

Altenburg Gardens, London, SW11



Total area (approx.): 34.8 sq. m (374.6 sq. ft)

Dexters

Northcote Road
93 St. John's Road
London
SW11 1QY
Sales
020 7483 6333

Energy Rating: C. We aim to make our particulars both accurate and reliable. However they are not guaranteed; nor do they form part of an offer or contract. If you require clarification on any points then please contact us, especially if you're traveling some distance to view. Please note that appliances and heating systems have not been tested and therefore no warranties can be given as to their good working order.

 **RICS** | Regulated
Estate Agent
and Letting Agent

[dexters.co.uk](https://www.dexters.co.uk)