



Bramfield Road, SW11

£875,000

Dexters



Bramfield Road, SW11

An exceptional Victorian conversion presented in immaculate order throughout located 'Between The Commons'. Comprising a spacious reception room, separate kitchen & dining area, two double bedrooms, two bathrooms, WC and a private South facing garden.

Upon entering you are greeted by a wide and welcoming hallway. At the front of the property you have a spacious reception room with high ceilings and period features. The dining room is positioned perfectly in-between the reception room and kitchen, great for entertaining. The private South facing garden is found as you exit the back door through the kitchen. Through the hallway you have a WC and double bedroom with built in storage and en-suite which overlooks the garden. The cellar completes the accommodation on this floor. On the first floor you have the Principle bedroom also with built in storage & en-suite.

Bramfield Road is located between Clapham Common and Wandsworth Common and is one of the more sought-after streets between the commons. Clapham Junction, an array of shops, bars and restaurants as well as a selection of great schools are all nearby.

Features

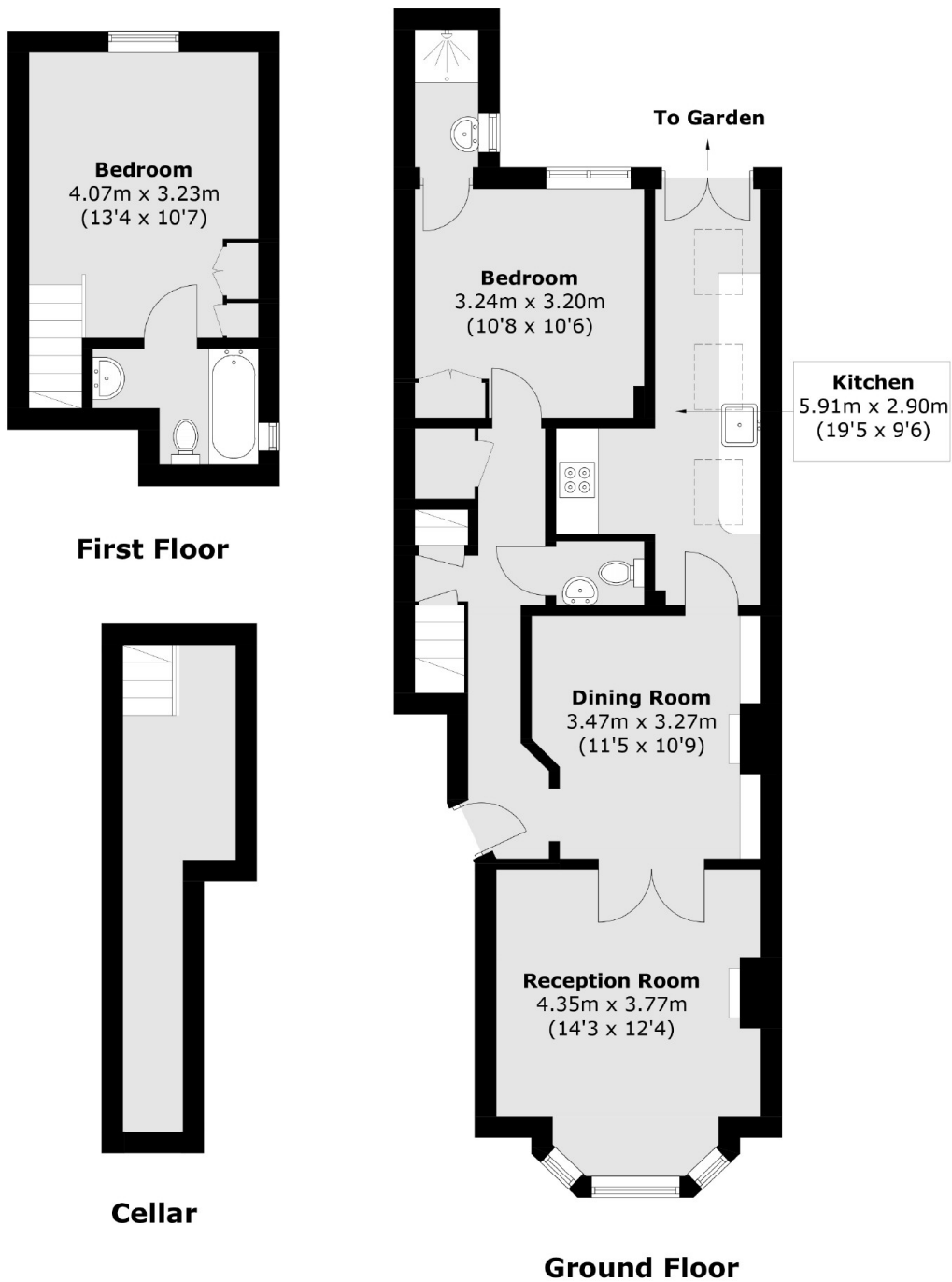
- Victorian Conversion
- Two Double Bedrooms
- Family Bathroom & WC
- Measuring Over 948 Sq Ft
- South Facing Private Garden
- Between The Commons







Bramfield Road, London, SW11



Total area (approx.): 88.1 sq. m (948.1 sq. ft)
(Including Cellar)