



Cambridge Road, SW11

£800,000

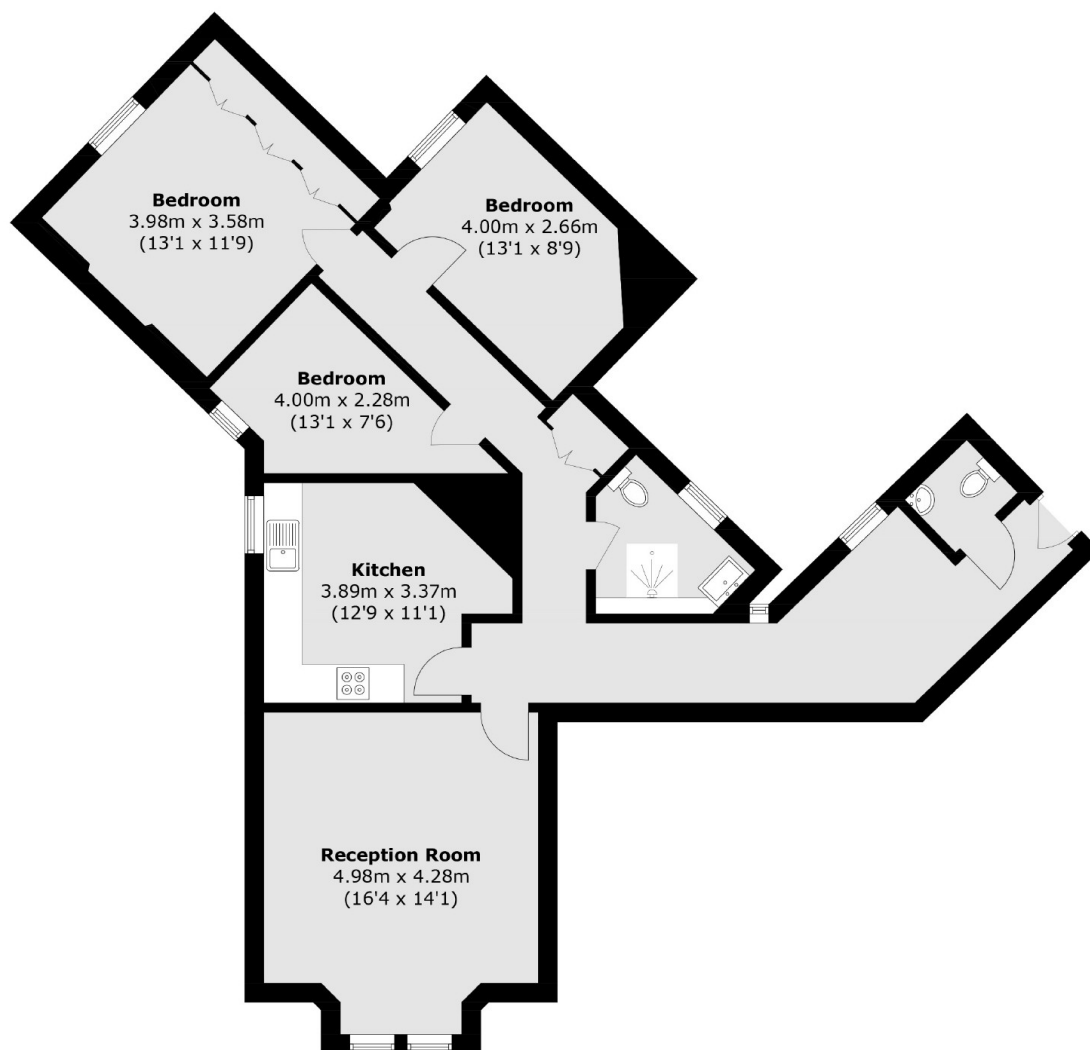
An immaculate and well proportioned three double bedroom apartment measuring over 1,044 Sq Ft. The property comprises of a spacious reception room, modern eat-in kitchen, family bathroom and separate WC. The property further benefits from owning a share of the freehold, has a lift in the communal areas which is very rare in these mansion blocks and is moments from Battersea Park and the Iconic Battersea Power Station. The property is being sold chain free.

Cambridge Road offers excellent transport links to the rest of London. The nearby overground provides access into Waterloo & Victoria with the nearby tube (Northern Line) getting you into the City & Central London. Kings Road and Battersea Power Station development are a short stroll across the park.

Features

- Three Double Bedrooms
- Spacious Reception Room
- Modern Kitchen
- Share Of Freehold
- Superb Location
- Communal Lift

Cambridge Road, London, SW11



Total area (approx.): 97.0 sq. m (1,044.1 sq. ft)