



Leathwaite Road, SW11  
£900,000

**Dexters**



## Leathwaite Road, SW11

An exceptional fully extended Victorian conversion presented in immaculate order throughout. Comprising an open plan kitchen & dining room, large reception room, two double bedrooms, family bathroom, en-suite WC and a private West facing garden. The property also benefits from a share of the freehold & is located 'Between The Commons'.

Upon entering you are greeted by a wide and welcoming reception room. To the front of the property is a spacious double bedroom with bespoke built in storage, wooden shutters and high ceilings. The extended kitchen & dining room can be accessed either side of the reception room. The kitchen houses a breakfast bar, integrated appliances and bifold doors leading out to the private West facing garden, a great space for entertaining. A further double bedroom with en-suite WC can be found on the first floor which overlooks the garden and has dual aspect windows allowing vast amounts of natural light to filter through. On the lower ground floor there is a versatile utility room and family bathroom.

Leathwaite Road is located between Clapham Common and Wandsworth Common and is one of the more sought-after streets between the commons. Clapham Junction, an array of shops, bars and restaurants as well as a selection of great schools are all nearby.

### Features

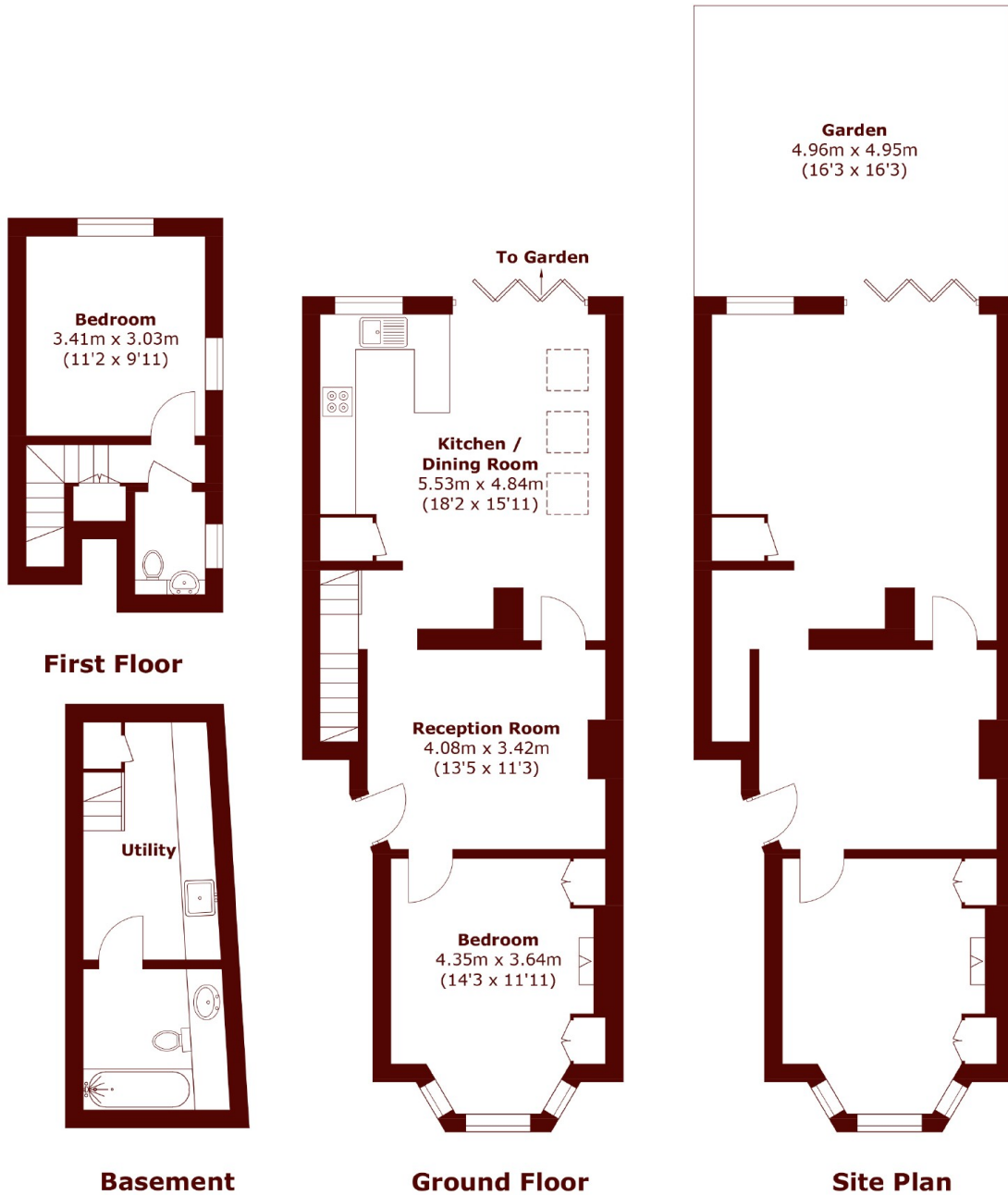
- Between The Commons
- Victorian Conversion
- Two Double Bedrooms
- Measuring Over 968 Sq Ft
- West Facing Private Garden
- Share Of Freehold







# Leathwaite Road, London, SW11



Total area (approx.): 90.0 sq. m (968.7 sq. ft)