



Lavender Hill, SW11

£850,000

Dexters



Lavender Hill, SW11

A stunning split level penthouse on the popular Lavender Hill measuring over 995 sq ft with breathtaking views of London. The property comprises a spacious open plan reception/kitchen, two large double bedrooms, two bathrooms (inc en-suite) & private roof terrace.

There is a fantastic living area perfect for entertaining with private roof terrace overlooking London. The entire property is flooded with natural light with windows on all sides, also a great space for working from home. This room has a modern kitchen with plenty of worktop space and storage and includes a range of fitted appliances. There are two double bedrooms, the Principle has an en suite bathroom and both have bespoke built in storage. Unlike most two double bedroom apartments, both bedrooms are well proportioned great for sharers and guests alike.

The property is located on Lavender Hill and near Clapham Old Town/ Northcote Road which offers a good selection of shops, cafés, bars and restaurants. It is located between Clapham Common Tube Station and Clapham Junction overground, Clapham Common is a short stroll away.

Features

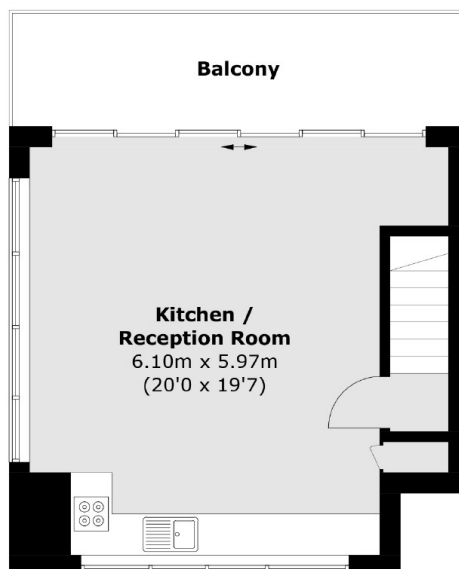
- Penthouse Apartment
- Open Plan Reception/Kitchen
- Two Double Bedrooms
- Two Bathrooms
- Large Private Roof Terrace
- Stunning Views Of London



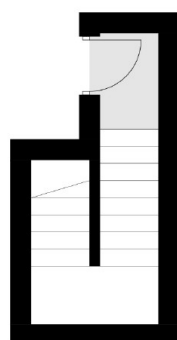
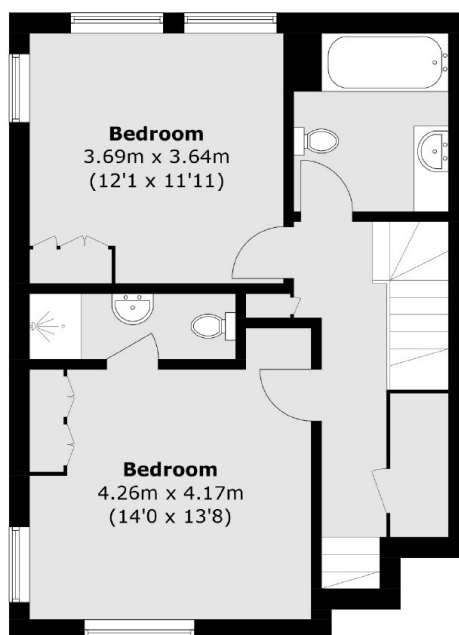




Lavender Hill, London, SW11



Third Floor



First Floor

Second Floor

Total area (approx.): 92.5 sq. m (995.6 sq. ft)
Balcony: 10.9 sq. m (117.3 sq. ft)