



## St. Philip Street, SW8

£950,000

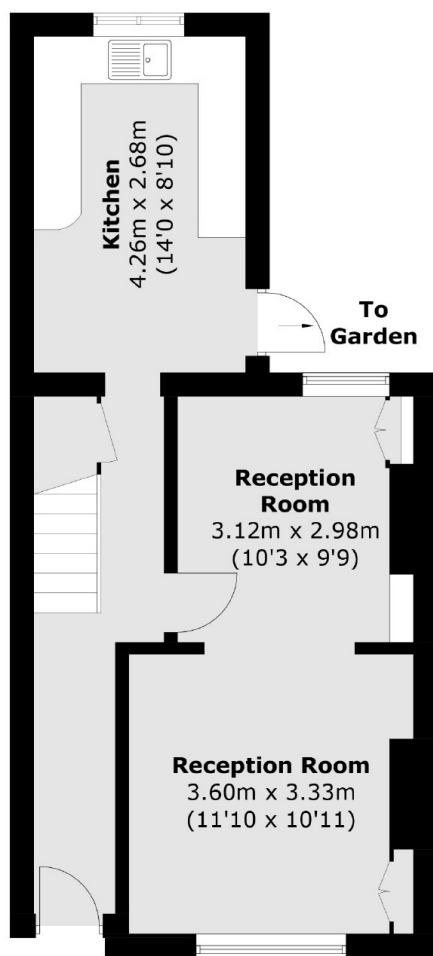
A beautiful three double bedroom freehold house located in the popular Diamond Conservation. Accommodation includes a large reception room, dining room, family bathroom & private garden. The property further benefits from extension potential (STP) & is being sold chain free.

St. Philip Street Is a quiet residential street tucked away behind Queenstown Road. It is ideally located for access into Clapham Old Town and Clapham Junction station. The Iconic Battersea Power Station & Battersea Park are a short stroll away.

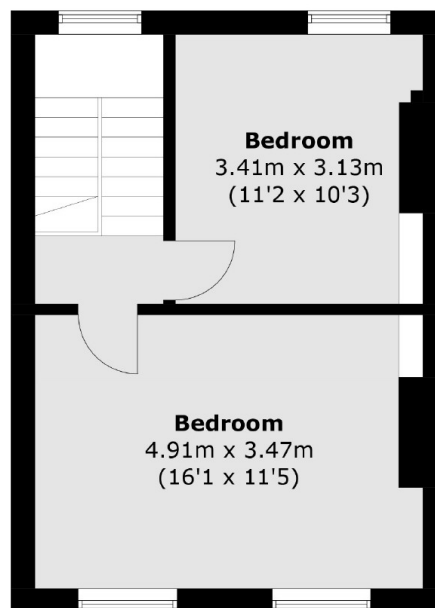
### Features

- Three Double Bedrooms
- Large Reception Room
- Family Bathroom
- Private Garden
- Extension Potential (STP)
- Chain Free

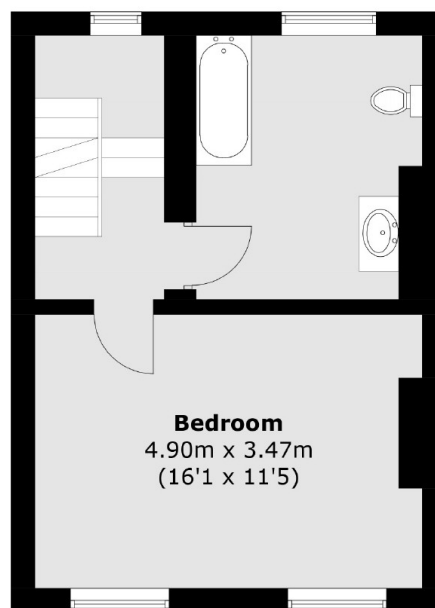
St. Philip Street,  
London, SW8



**Ground Floor**



**Second Floor**



**First Floor**

Total area (approx.): 113.7 sq. m (1,223.8 sq. ft)