



Rush Hill Mews, SW11

£1,100,000

This rarely available freehold house is located within a gated mews set just off Rush Hill Road. Accommodation includes a large reception room, separate modern kitchen, three double bedrooms and three bathrooms (inc en-suite). The property further benefits from being sold chain free, has a private garden and a off street parking.

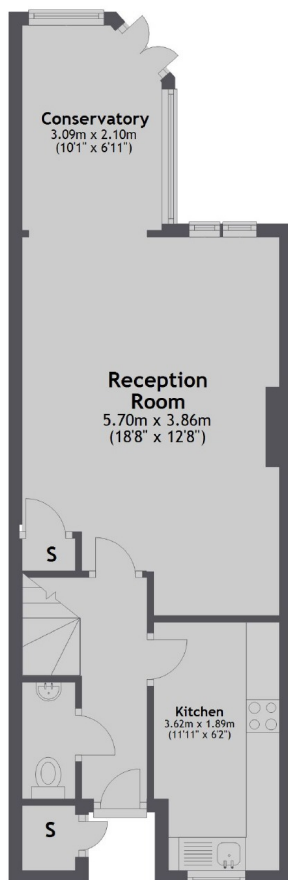
Rush Hill Mews is a short stroll away from Clapham Common with Lavender Hill & Northcote Road on your doorstep. Clapham Junction, Queenstown Road & Clapham Common Underground stations are within easy reach.

Features

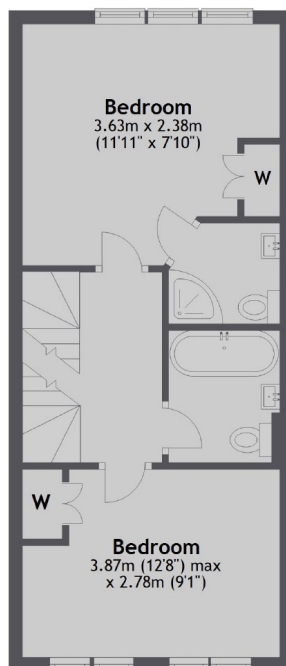
- Three Double Bedrooms
- Three Bathrooms
- Private Garden
- Off Street Parking
- Gated Mews
- Chain Free

Rush Hill Mews, London, SW11

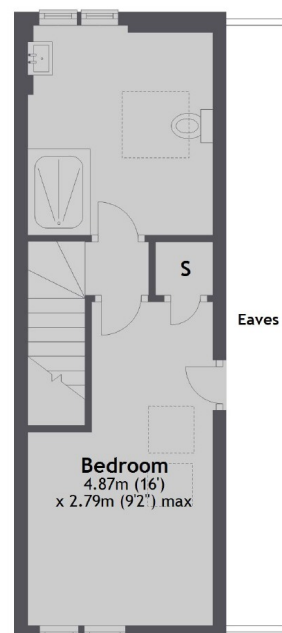
Ground Floor



First Floor



Second Floor



Total area: approx. 103.5 sq. metres (1114.0 sq. feet)