



Ingelow Road, SW8

£775,000

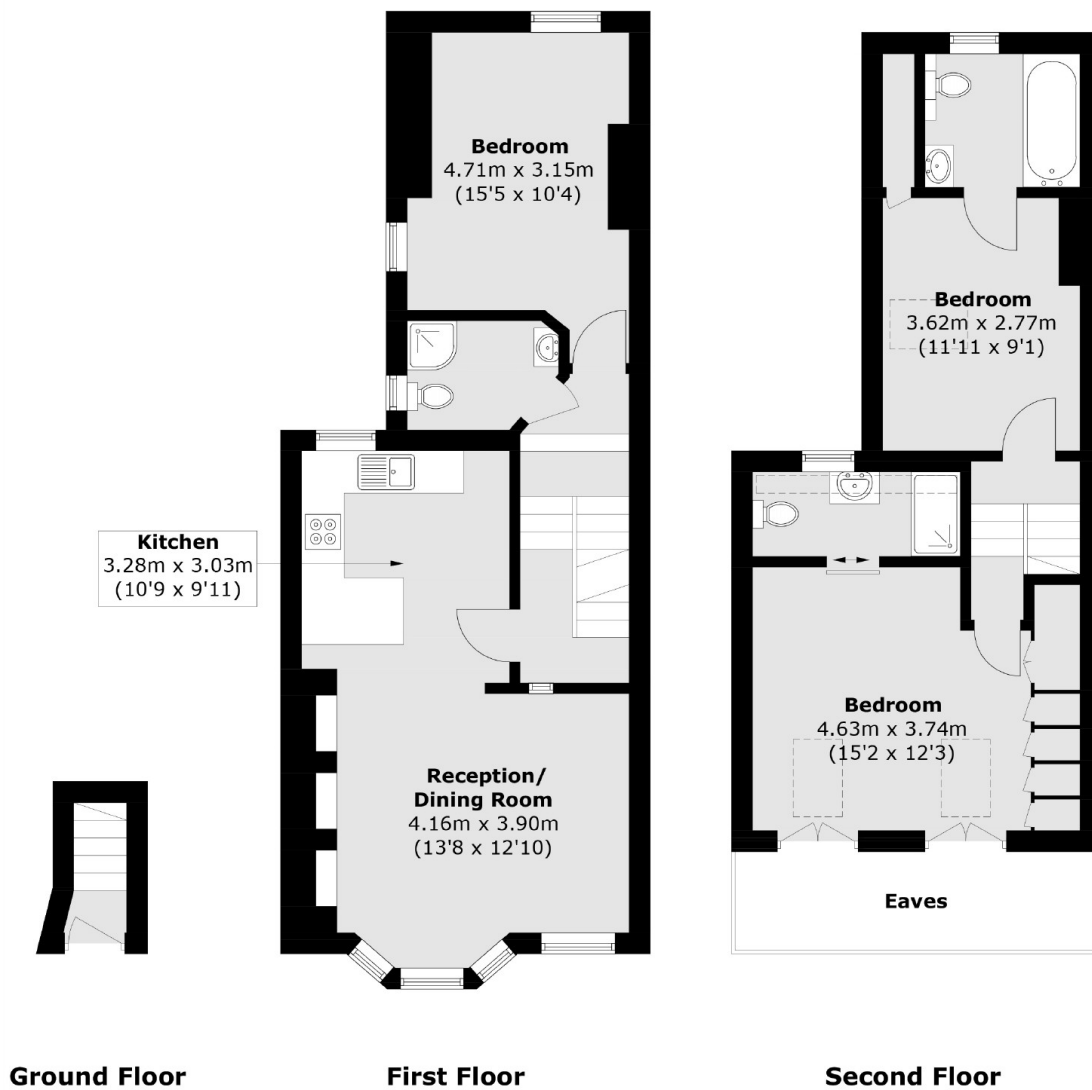
An exceptional Victorian conversion presented in immaculate order throughout measuring over 979 Sq Ft. Comprising a large open plan reception/kitchen, three double bedrooms & three bathrooms including two en-suites. The property is being sold chain free.

Ingelow Road is a quiet residential street tucked away behind the Queenstown Road. It is ideally located for access into Clapham Old Town and Clapham Junction station. The Iconic Battersea Power Station & Battersea Park are a short stroll away.

Features

- Victorian Conversion
- Three Double Bedrooms
- Three Bathrooms
- Superb Location
- Measuring Over 979 Sq Ft
- Chain Free

Ingelow Road, London, SW8



Total area (approx.): 91.0 sq. m (979.5 sq. ft)
(Excluding Eaves)