



**Burns Road, SW11**

**£900,000**

**Dexters**



## Burns Road, SW11

A rarely available freehold house located on Burns Road. Accommodation includes a large open plan reception room with adjoining modern kitchen, two double bedrooms & additional study space with mezzanine and two bathrooms inc en-suite. The property further benefits from a private balcony, large communal garden and is being sold chain free.

Upon entering you are greeted by a wide and welcoming reception room. Through the reception room you are greeted by a large, light and airy eat-in kitchen with plenty of built in storage and worktop space, this room leads onto the communal garden. Upstairs you have two well proportioned double bedrooms and two bathrooms including en-suite. There is an extra versatile room with mezzanine overlooking one of the bedrooms which can be used as a guest space or study or as an extension the the bedroom itself. This bedroom also has a private balcony.

Burns Road offers excellent transport links to the rest of London. The nearby overground provides access into Waterloo & Victoria with the nearby tube (Northern Line) getting you into the City & Central London. Kings Road and the Iconic Battersea Power Station development are a short stroll across the park.

### Features

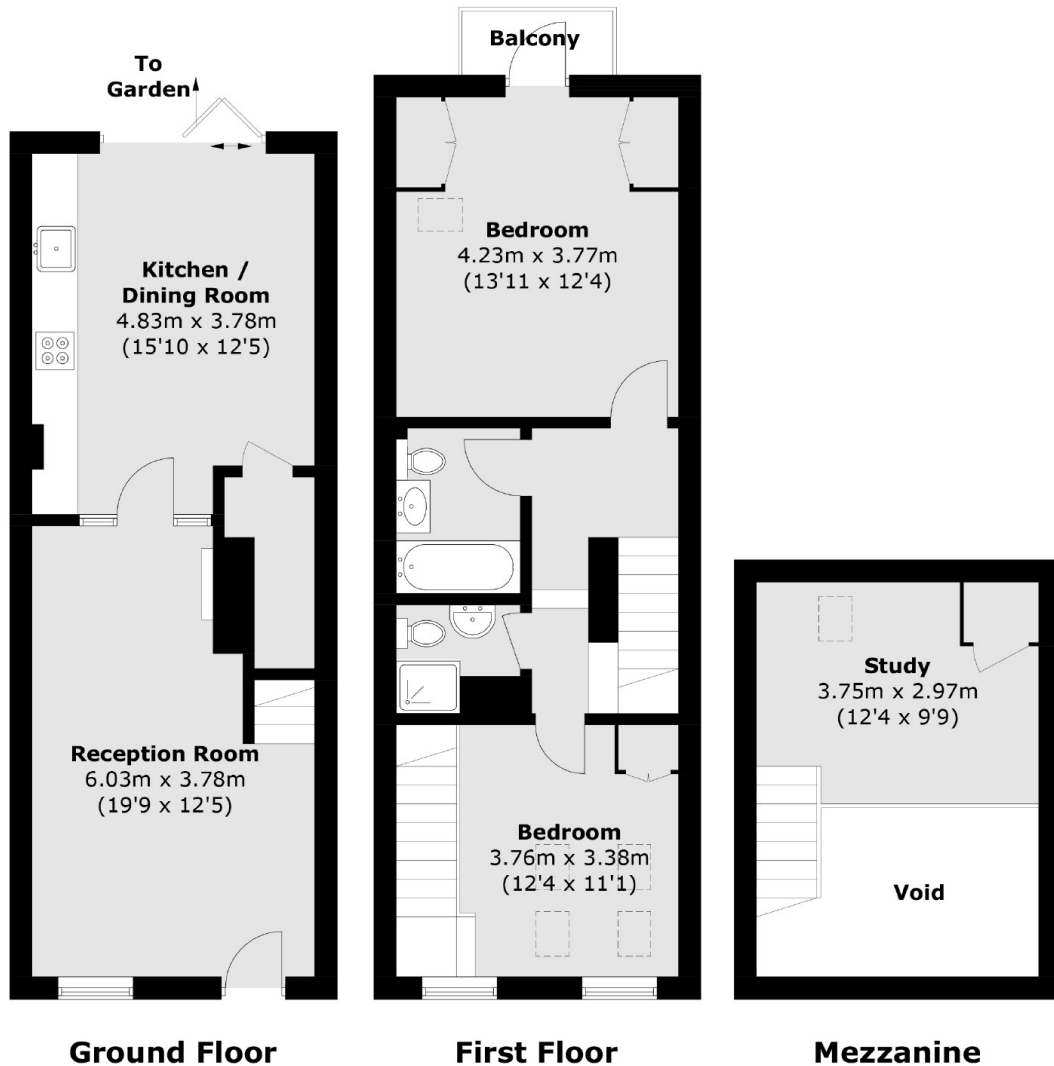
- Freehold
- Two Double Bedrooms
- Additional Study Room
- Two Bathrooms
- Communal Garden & Balcony
- Chain Free







# Burns Road, London, SW11



Total area (approx.): 97.7 sq. m (1,051.6 sq. ft)  
Balcony area (approx.): 1.7 sq. m (18.3 sq. ft)  
(Excluding Void)