



Mallinson Road, SW11

£799,999

Dexters



Mallinson Road, SW11

An exceptional fully extended Victorian conversion presented in immaculate order throughout located 'Between The Commons'. Comprising an open plan reception/kitchen & dining area, two double bedrooms, family bathroom and a private garden. The property also benefits from being sold chain free.

Upon entering you are greeted by a wide and welcoming hallway. To the left is a large double bedroom with high ceilings which floods the room with natural light. A second double bedroom is located next door with bespoke built in storage and courtyard. The modern family bathroom is the next room through the hallway. At the end of the property is the main event, a spacious and fully extended open plan reception/kitchen & dining area with bifold doors leading onto the private garden.

Mallinson Road is located between Clapham Common and Wandsworth Common and is one of the more sought-after streets between the commons. Clapham Junction, an array of shops, bars and restaurants as well as a selection of great schools are all nearby.

Features

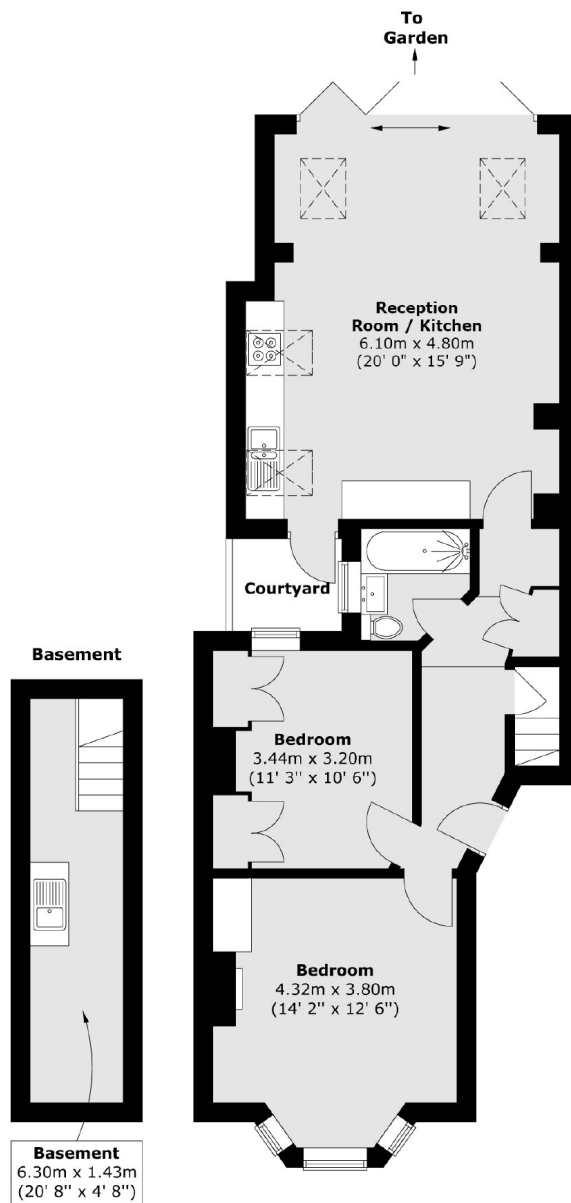
- Victorian Conversion
- Fully Extended
- Two Double Bedrooms
- Family Bathroom
- Private Garden
- Chain Free







Mallinson Road, London, SW11



Total area (approx.) : 76.3 sq. m (821 sq. ft)