



## Lavender Hill, SW11

### £450,000

A beautiful one double bedroom top floor period conversion measuring over 500 sq ft. It has a spacious open plan kitchen/reception room and modern bathroom. The property is being sold chain free.

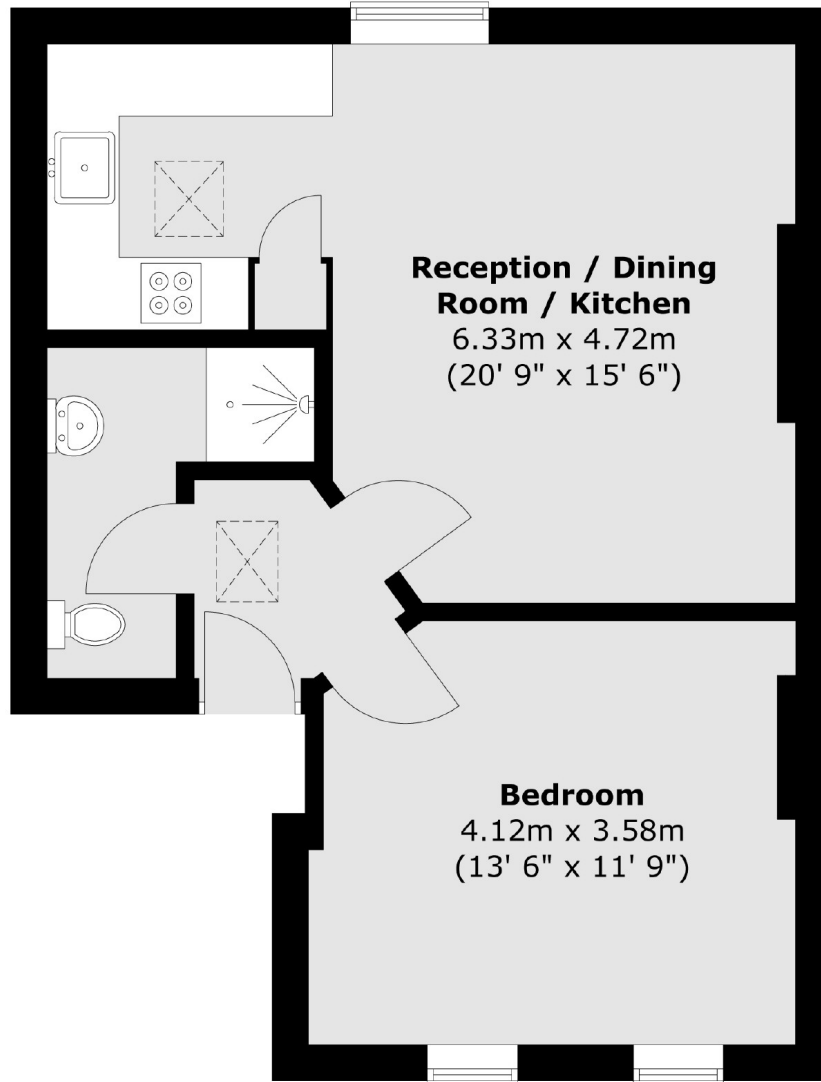
The property is located on Lavender Hill and near Clapham Old Town/Northcote Road which offers a good selection of shops, cafés, bars and restaurants. It is located between Clapham Common Tube Station and Clapham Junction overground, Clapham Common is a short stroll away.

### Features

- Top Floor Apartment
- One Double Bedroom
- Open Plan Kitchen/Reception
- Superb Location
- Modern Bathroom
- Chain Free

# Lavender Hill, London, SW11

## Third Floor



Total area (approx.) : 46.6 sq. m (502 sq. ft)