



Stormont Road, SW11

£600,000

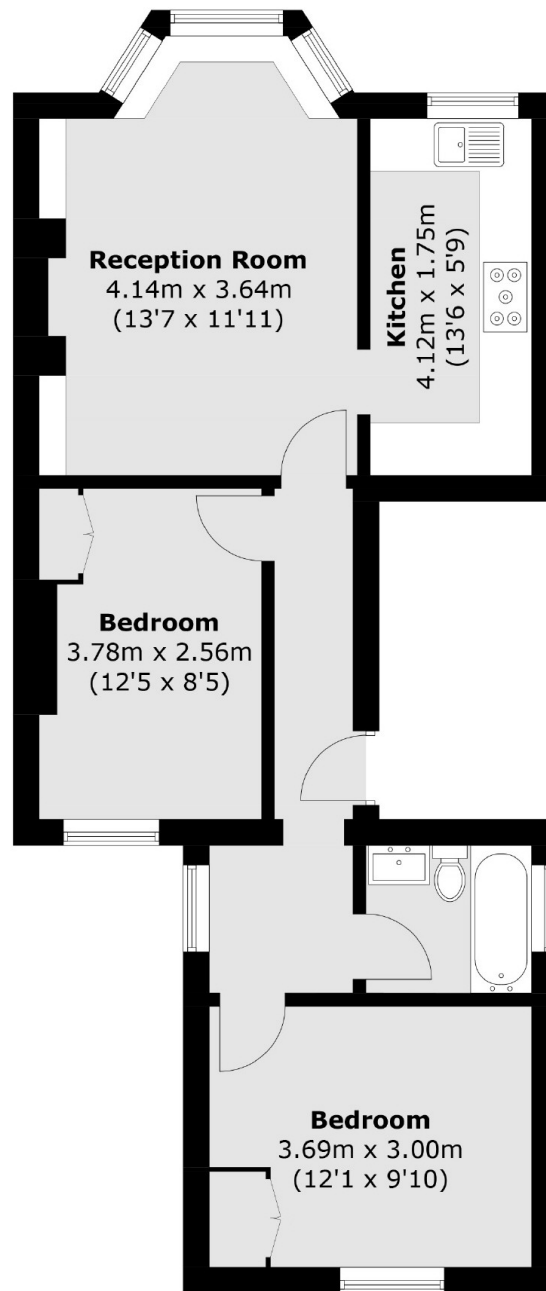
A spacious first floor period conversion measuring over 622 Sq Ft presented in excellent order throughout. Arranged to include a large reception room with beautiful bay window including bay seating area, modern kitchen, two double bedrooms and family bathroom. The property also benefits from being end of terrace so is flooded with natural light.

Stormont Road is conveniently located for Clapham Junction overground, the green spaces of Clapham Common as well as many shops, restaurants and bars on Northcote Road and Lavender Hill are nearby.

Features

- Period Conversion
- End Of Terrace
- Two Double Bedrooms
- Modern Kitchen
- Family Bathroom
- Superb Location

Stormont Road, London, SW11



Total area (approx.): 57.8 sq. m (622.1 sq. ft)