



Bridges Court Road, SW11

£500,000

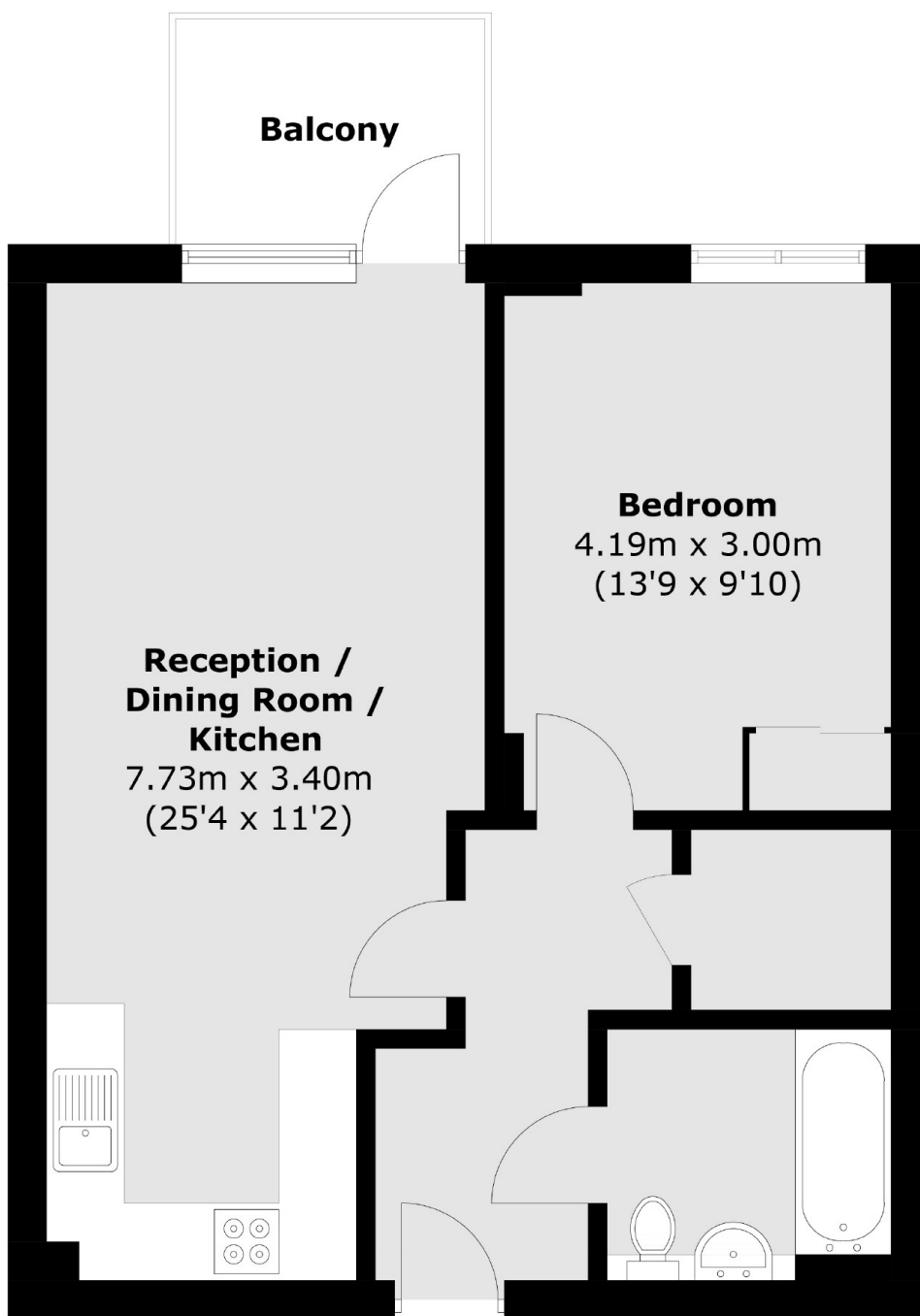
An impressive one double bedroom lateral apartment situated within the sought-after Voyager House development. Comprising a large open plan reception/kitchen & modern bathroom. The property further benefits from a concierge, private balcony & communal roof terrace.

Voyager House is well situated for excellent transport links with both Clapham Junction and Wandsworth Town Stations only a short walk away. Nearby Clapham and Wandsworth offer an array of retail and leisure facilities and Battersea Park/Power Station are also close by.

Features

- Open Plan Reception/Kitchen
- One Double Bedroom
- Modern Bathroom
- Private Balcony
- Communal Roof Terrace
- Concierge

Bridges Court Road, London, SW11



Total area (approx.): 51.0 sq. m (549.0 sq. ft)
Balcony area : 4.2 sq. m (45.2 sq. ft)

Dexters

Northcote Road
93 St. John's Road
London
SW11 1QY
Sales
020 7483 6333

Energy Rating: B. We aim to make our particulars both accurate and reliable. However they are not guaranteed; nor do they form part of an offer or contract. If you require clarification on any points then please contact us, especially if you're traveling some distance to view. Please note that appliances and heating systems have not been tested and therefore no warranties can be given as to their good working order.

 **RICS** | Regulated
Estate Agent
and Letting Agent

dexters.co.uk