



Taybridge Road, SW11

£650,000

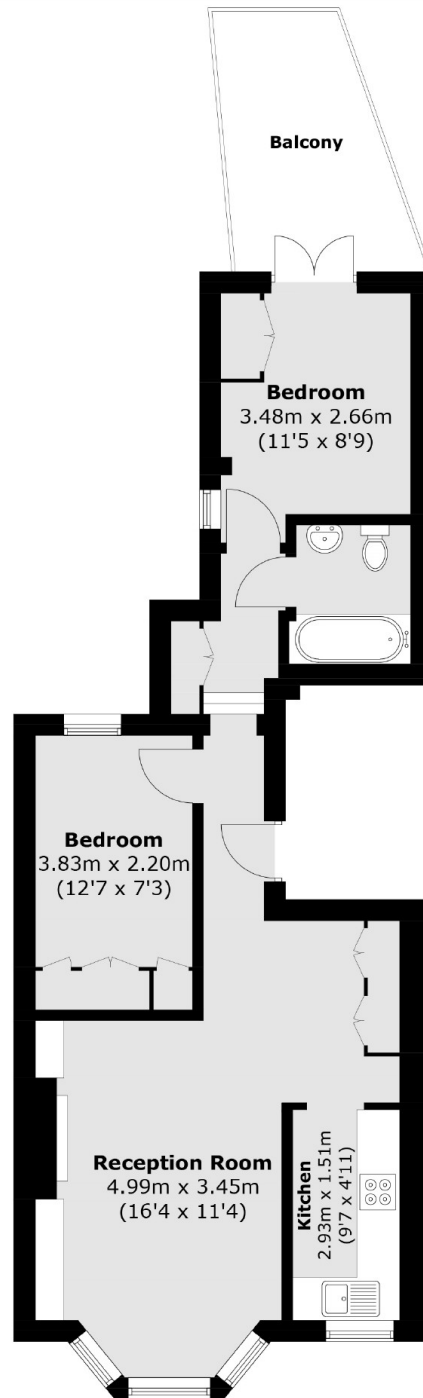
A spacious first floor period conversion measuring over 583 Sq Ft. Arranged to include a large reception room with beautiful bay window & high ceilings, separate kitchen, two double bedrooms, family bathroom & private roof terrace. The property has a 66 year lease.

Taybridge Road is conveniently located for Clapham Junction overground, the green spaces of Clapham Common as well as many shops, restaurants and bars on Northcote Road and Lavender Hill are nearby.

Features

- Period Conversion
- Two Double Bedrooms
- Separate Kitchen
- Superb Location
- Private Roof Terrace
- 66 Year Lease

Taybridge Road, London, SW11



Total area (approx.): 54.2 sq. m (583.4 sq. ft)
Balcony: 8.1 sq. m (87.2 sq. ft)