



Latchmere Road, SW11

£650,000

A ground floor maisonette with three double bedrooms measuring over 894 Sq Ft. The property has a large reception room, separate kitchen/dining room and low maintenance private garden. The property also benefits from having it's own front door, a share of the freehold and is being sold chain free.

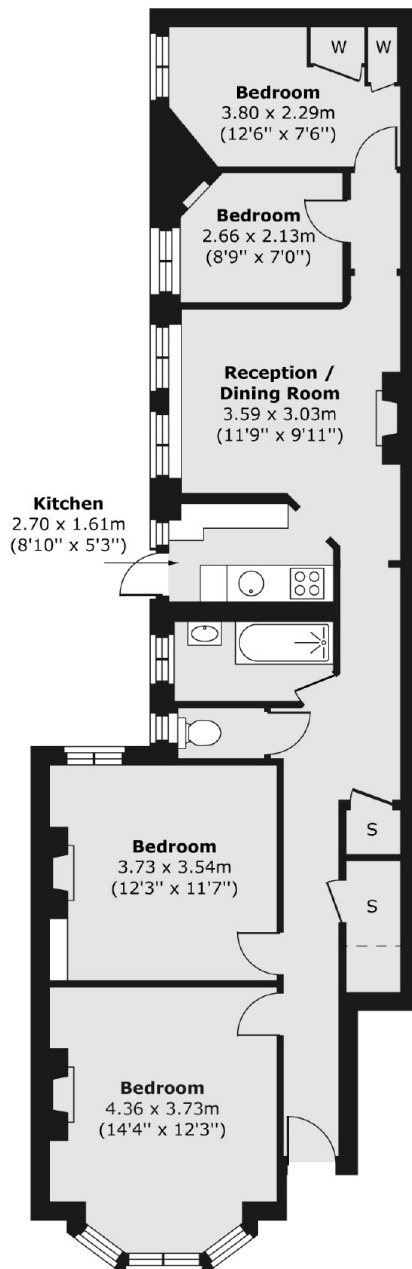
Latchmere Road is perfect for commuting from Clapham Junction into Central London and to Gatwick Airport. The green spaces of Clapham Common and Battersea Park are nearby, as are plenty of local pubs, restaurants and shops.

Features

- Ground Floor Maisonette
- Three Double Bedrooms
- Private Garden
- Own Front Door
- Share Of Freehold
- Chain Free

Latchmere Road, London, SW11

Ground Floor



Total area (approx.) 83.02 sq. m (894 sq. ft)