



Lombard Road, SW11

£575,000

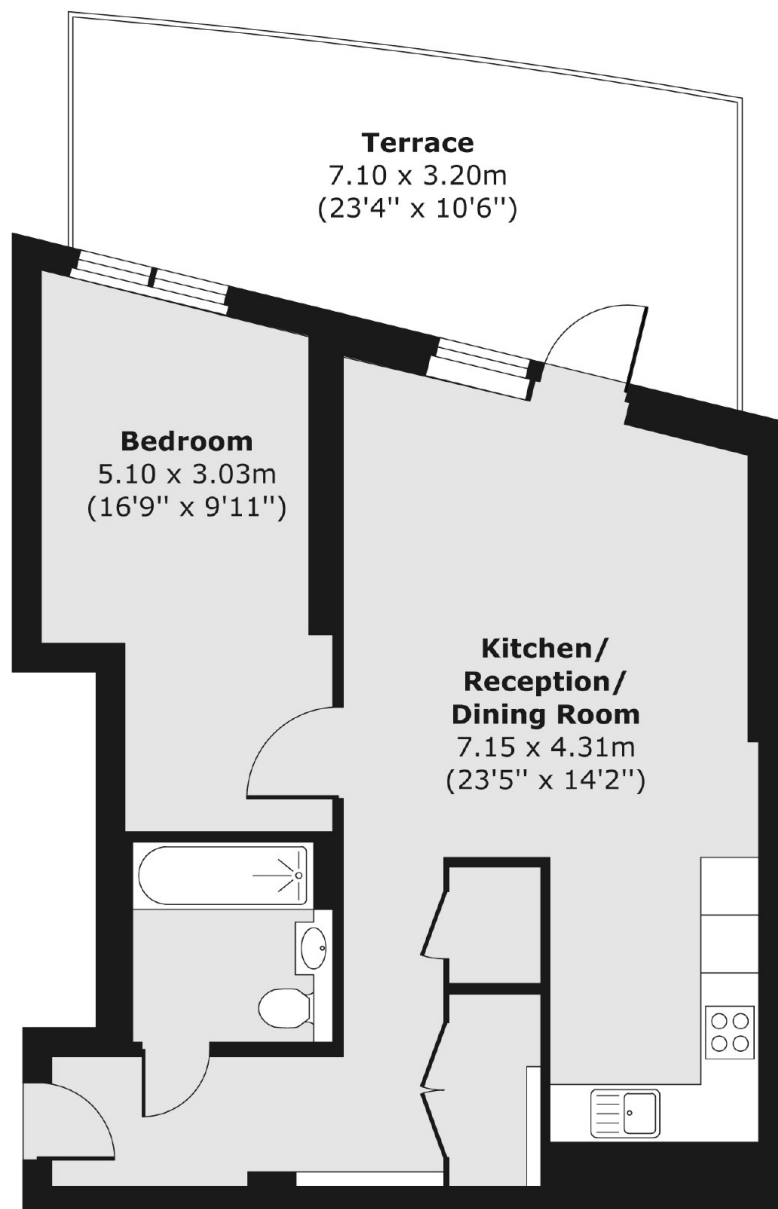
A beautiful one double bedroom apartment in Lombard wharf, a prestigious riverside building. It includes a large, south facing private balcony offering breathtaking views of The Thames and London Beyond.

Lombard Wharf is located overlooking The Thames at Battersea Riverside, close to the cafés and restaurants of Battersea Square.

Features

- Prestigious Building
- Beautifully Presented
- 629 sq ft Internal Space
- 200 sq ft South Facing Private Balcony
- Storage Cupboard
- Amazing Views
- 24hr Concierge

Lombard Road, London, SW11



Total area (approx.) 58.39 sq. m (629 sq. ft)

Terrace area (approx.) 19.67 sq. m (212 sq. ft)

Dexters

Northcote Road
93 St. John's Road
London
SW11 1QY
Sales
020 7483 6333

Energy Rating: B. We aim to make our particulars both accurate and reliable. However they are not guaranteed; nor do they form part of an offer or contract. If you require clarification on any points then please contact us, especially if you're traveling some distance to view. Please note that appliances and heating systems have not been tested and therefore no warranties can be given as to their good working order.

 **RICS** | Regulated
Estate Agent
and Letting Agent

dexters.co.uk