



Hyde Lane, SW11

£875,000

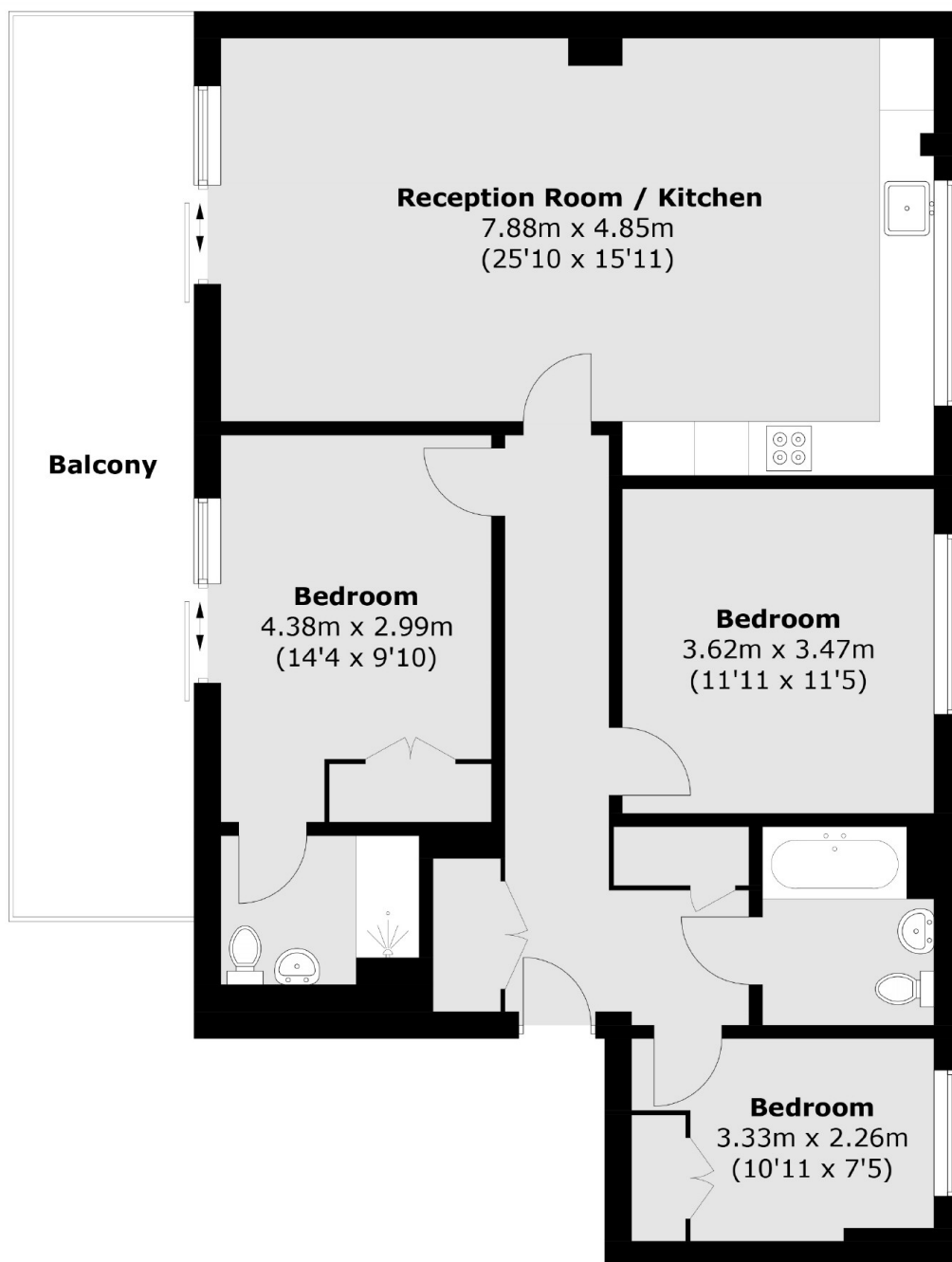
A fantastic three double bedroom high spec top floor apartment in a sought after development near Battersea Park. The property comes with a large bright and airy open plan kitchen/reception room with integrated appliances, two modern bathrooms and a private full width balcony. The property further benefits from extension potential (STP) and has plenty of storage.

Hyde Lane is located close to the the river and opposite Battersea Park, Sloane Square, and Battersea Power Station. Queenstown Road and Battersea Park national rail stations are a short walk away, as is Sloane Square underground station.

Features

- Three Double Bedrooms
- Two Bathrooms
- Close To Battersea Park
- Measuring 1,015 Sq Ft
- Modern Development
- Extension Potential (STP)

Hyde Lane, London, SW11



Total area (approx.): 94.3 sq. m (1,015.0 sq. ft)
Balcony area (approx.): 20.0 sq. m (215.3 sq. ft)