



Restoration Square, SW11
£1,000,000

Dexters



Restoration Square, SW11

This rarely available semi-detached freehold house is located within a gated mews set just off Battersea High Street. Accommodation includes a large reception/dining room, separate modern kitchen, two double bedrooms, two bathrooms and separate WC. The property further benefits from being sold chain free, has a private balcony and garden, has off street parking and has opportunity to extend (STP) to create a further two bedrooms.

On the ground floor through the front door you have a wide and welcoming entrance. To the left you have a garage and to the right a WC. To the rear of the property on the ground floor you have a spacious reception room/dining area leading onto the private garden and an adjoining modern kitchen, an overall great space for entertaining. On the first floor you have the Principle bedroom which benefits from a private balcony and en-suite. There is another double bedroom and family bathroom on this floor. There is potential to add an additional floor above just like next door to create a further two bedrooms (STP) A well maintained communal garden can also be found within the mews.

Restoration Square is a sought after location near the River Thames. Located conveniently for Battersea Park and High Street, as well as easy access to the Kings Road in Chelsea. Clapham Junction railway station is also a short walk away.

Features

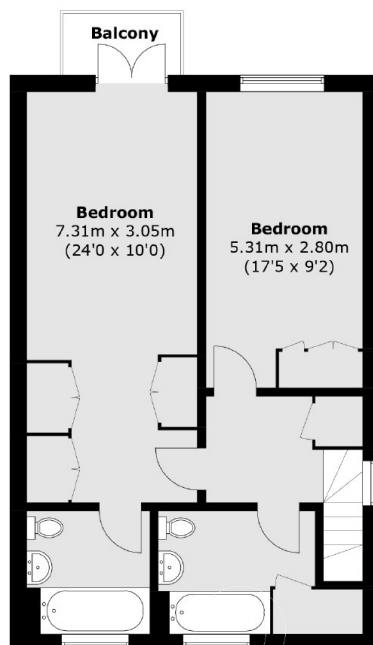
- Gated Freehold Mews House
- Large Reception Room
- Two Double Bedrooms
- Two Bathrooms
- Off Street Parking
- Chain Free



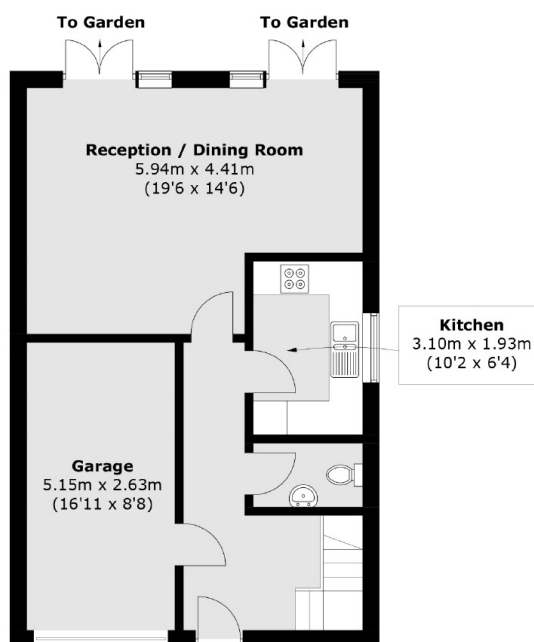




Restoration Square, London, SW11



First Floor



Ground Floor

Total area (approx.): 117.1 sq. m (1,260.4 sq. ft)
Balcony (approx.): 2.3 sq. m (24.7 sq. ft)