



St. John's Hill, SW11

£250,000

A well presented first floor studio apartment set moments from Clapham Junction Station. The property includes an open plan kitchen/living area, three piece bathroom and fitted wardrobes. The property is also being sold chain free.

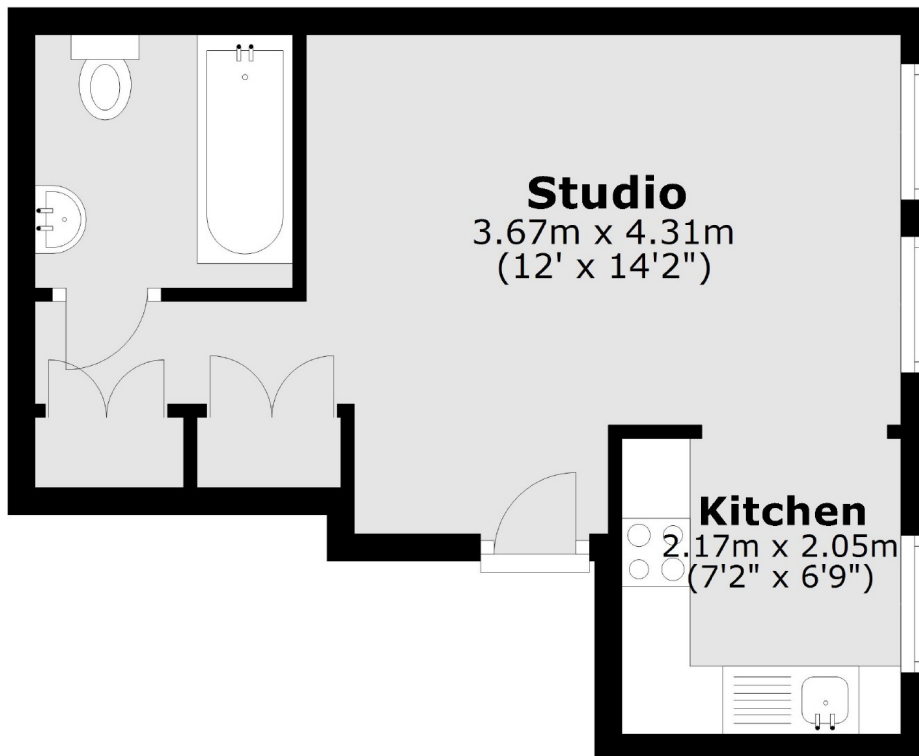
St. John's Hill is a popular location set close to the green open spaces of Wandsworth Common. It is a short walk to Northcote Road, Clapham Junction station and offers an array of bars, restaurants and shopping amenities.

Features

- Studio Apartment
- Open Plan Living
- Modern Bathroom
- First Floor Flat
- Bright And Airy
- Close to Transport

**St. John's Hill,
London, SW11**

First Floor



Total area: approx. 25.5 sq. metres (274.9 sq. feet)