



Gambetta Street, SW8

£625,000

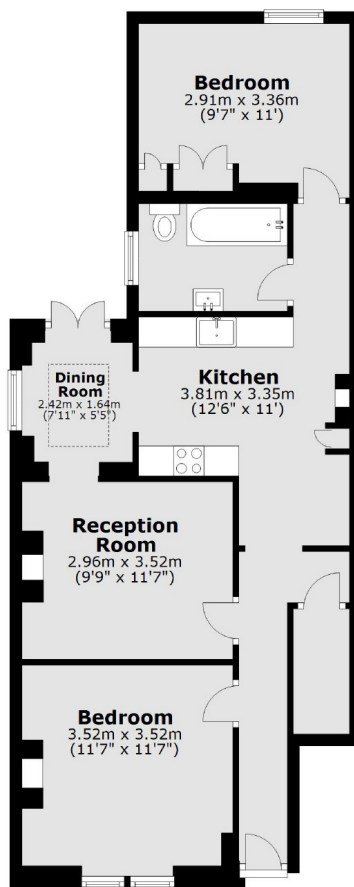
An extremely well presented two double bedroom ground floor maisonette. It has a spacious kitchen/dining/living area, plenty of storage and has been renovated to a high standard.

Gambetta Street is located on a quiet residential road within the popular 'Diamond Conservation' area, the flat is within easy reach of the amenities of Queenstown Road and local transport links.

Features

- Two Double Bedrooms
- Own Front Door
- Private Garden
- Close to Transport
- Recently Renovated
- Superb Location

Gambetta Street, London, SW8



Total area: approx. 64.6 sq. metres (695.5 sq. feet)