



Rush Hill Road, SW11

£612,500

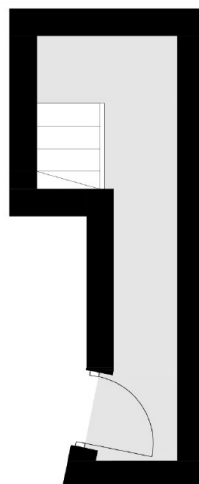
A spacious top floor period conversion presented in excellent order throughout measuring over 764 Sq Ft. Arranged to include a large open plan reception room/kitchen with vast amounts of natural light, a private roof terrace, two double bedrooms and a modern bathroom. There is extension potential to add a further roof terrace and second bathroom (STP)

Rush Hill Road Road is a sought after residential street off Clapham Common North Side located near some of the areas best schools. Northcote Road is close by with an array of bars, restaurants and cafés. Transport links can be found at Clapham Common and Clapham Junction alongside local bus routes with access to the beautiful Battersea Park and busy Sloane Square.

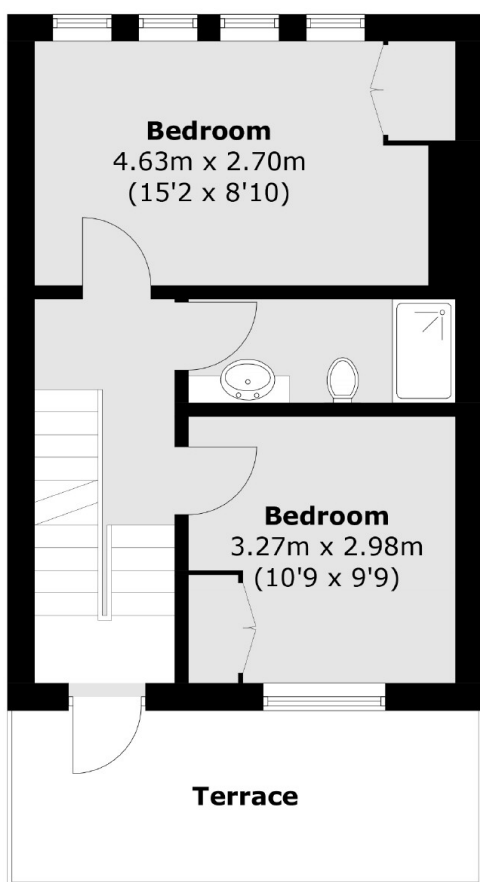
Features

- Victorian Conversion
- Open Plan Reception/Kitchen
- Two Double Bedrooms
- Private Roof Terrace
- Extension Potential (STP)
- Superb Location

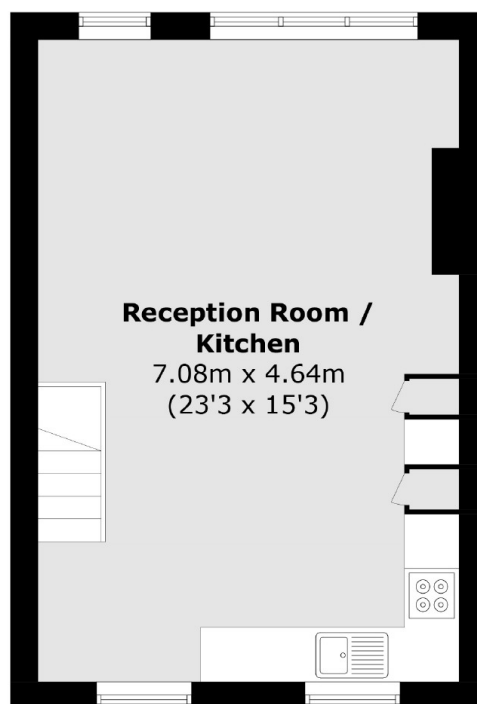
Rush Hill Road, London, SW11



First Floor



Second Floor



Third Floor

Total area (approx.): 71.0 sq. m (764.2 sq. ft)
Terrace: 9.8 sq. m (105.5 sq. ft)