



Leathwaite Road, SW11

£605,000

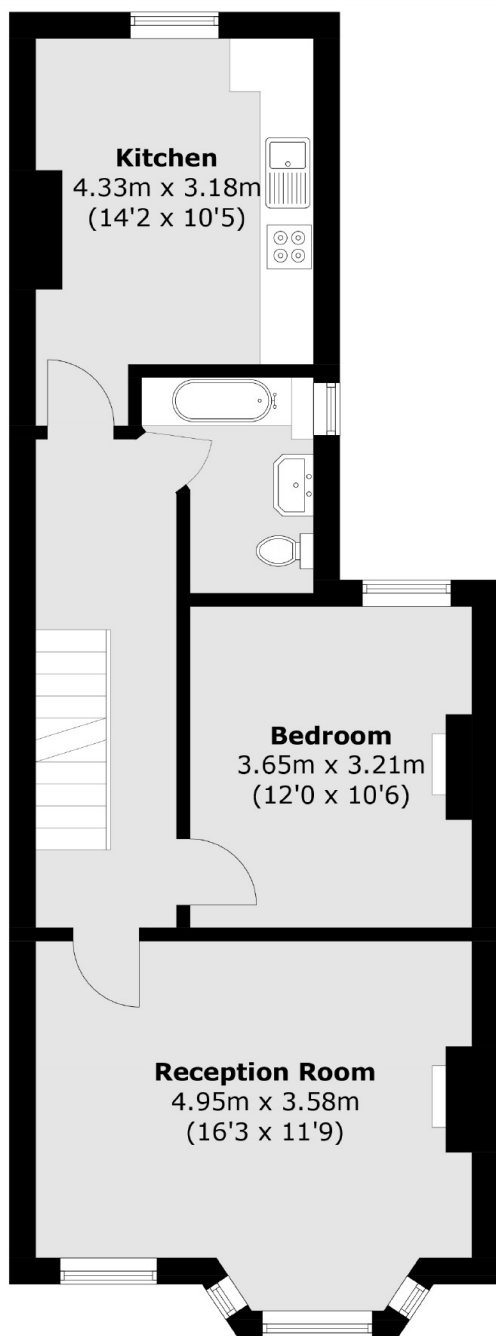
A Victorian split level apartment measuring 827 Sq Ft. Comprising a large reception room, an eat-in kitchen, two double bedrooms and a bathroom. The property has potential to extend further by adding a dormer into the loft (STP).

Leathwaite Road is located between Clapham Common and Wandsworth Common and is one of the more sought-after streets between the commons. Clapham Junction, an array of shops, bars and restaurants as well as a selection of great schools and the Common itself, all within close proximity.

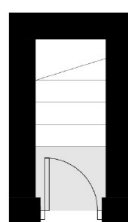
Features

- Victorian Conversion
- Two Double Bedrooms
- Separate Reception Room
- Measuring 827 Sq Ft
- Superb Location
- Extension Opportunity (STP)

Leathwaite Road, London, SW11



First Floor



Ground Floor



Second Floor

Total area (approx.): 76.9 sq. m (827.7 sq. ft)