



Queenstown Road, SW8

£375,000

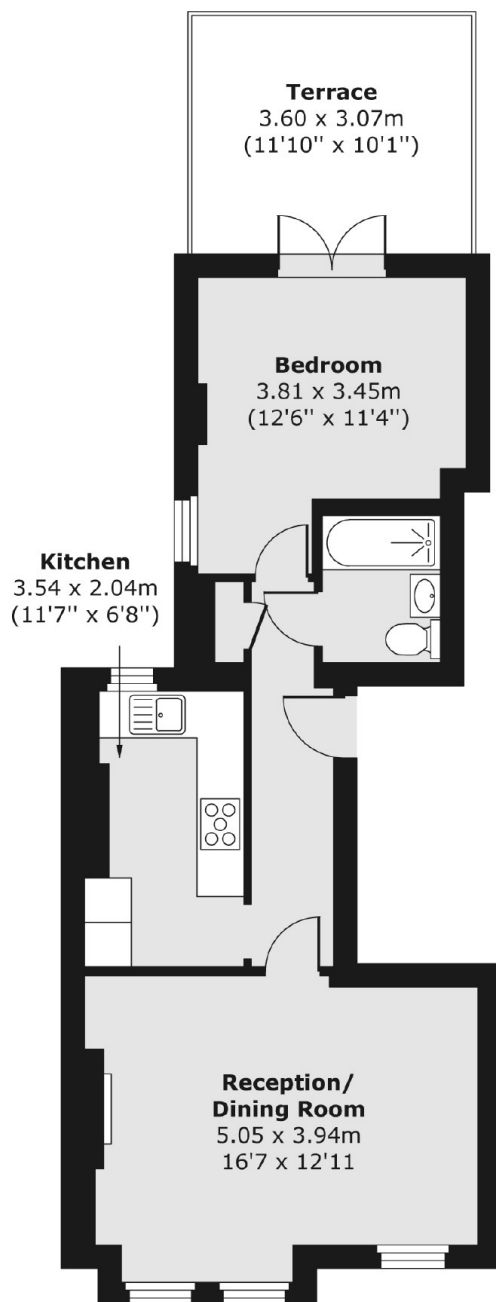
Spacious one double bedroom period conversion flat with private roof terrace located near to the iconic Battersea Park & Power Station.

Queenstown Road runs between Clapham Common and Battersea Park. The flat itself is located just by Queenstown Road station and the Battersea Park Road.

Features

- 500 sq ft
- 16ft Reception Room
- Separate Kitchen
- Roof Terrace
- No Chain
- Long Lease

Queenstown Road, London, SW8



Total area (approx.) 46.33 sq. m (499 sq. ft)
Terrace area (approx.) 11.05 sq. m (119 sq. ft)