



## Marjorie Grove, SW11

£425,000

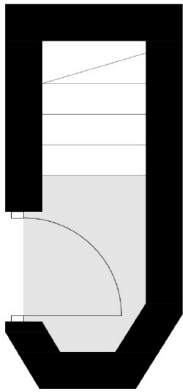
A contemporary, split level apartment situated on the sought after Marjorie Grove. The apartment comprises of a spacious open plan reception room/kitchen, large double bedroom and modern bathroom. The property benefits further from a private balcony and plenty of storage.

Marjorie Grove is a sought after quiet residential street located North of Clapham Common. It is situated in the catchment areas for some of the best schools; Belleville Primary School, Eaton House, Parkgate House, and Belleville Wix Academy and is a short stroll away from both Clapham Junction overground and Clapham Common Tube Station.

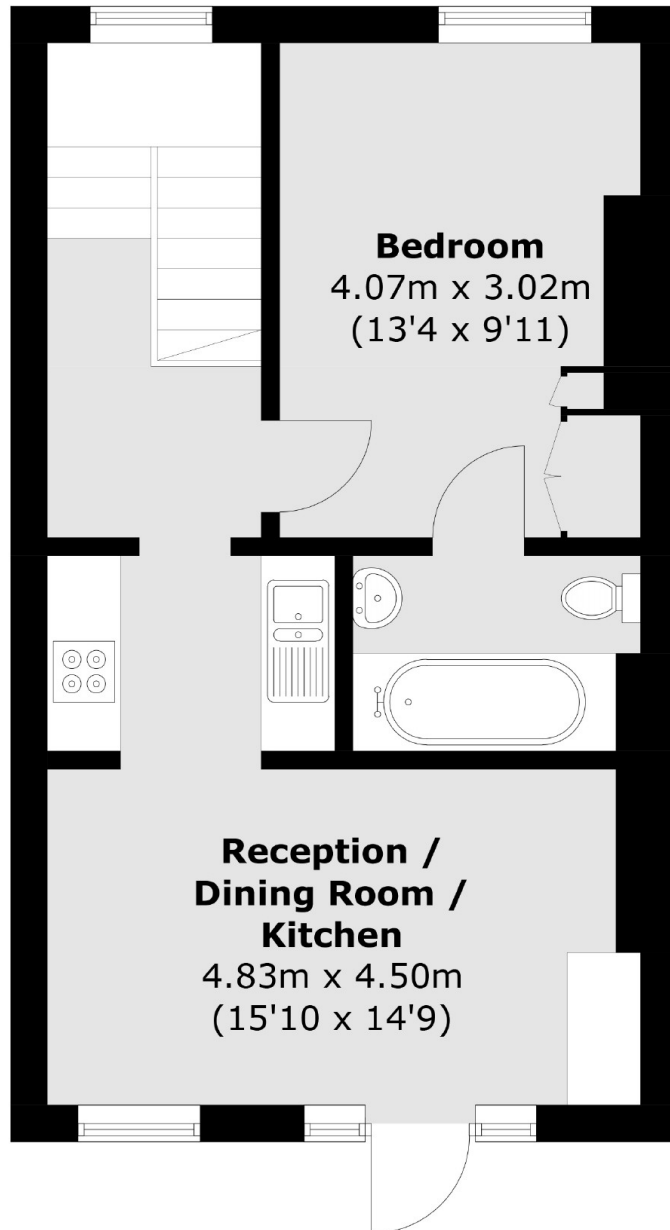
### Features

- Victorian Conversion
- Open Plan Reception/Kitchen
- Modern Bathroom
- Fully Refurbished
- Private Balcony
- Superb Location

# Marjorie Grove, London, SW11



**Ground Floor**



**First Floor**

Total area (approx.): 44.5 sq. m (479.0 sq. ft)