



Property Description

Situated in the heart of Princes Risborough High Street, this spacious and beautifully light two-bedroom duplex apartment offers convenient town-centre living with shared rooftop terrace. Accessed via a private staircase from the High Street, the accommodation features a generous lounge/dining area, a well-equipped fitted kitchen with appliances, a large principal bedroom, a second bedroom, and a modern bathroom.

Princes Risborough is a highly sought-after market town, known for its friendly community, historic character, and easy access to the Chilterns Area of Outstanding Natural Beauty. Just a short stroll from the property, you'll find an excellent selection of cafés, independent shops, restaurants, and everyday amenities. The town also offers leisure facilities, scenic walking routes, and a regular weekly market.

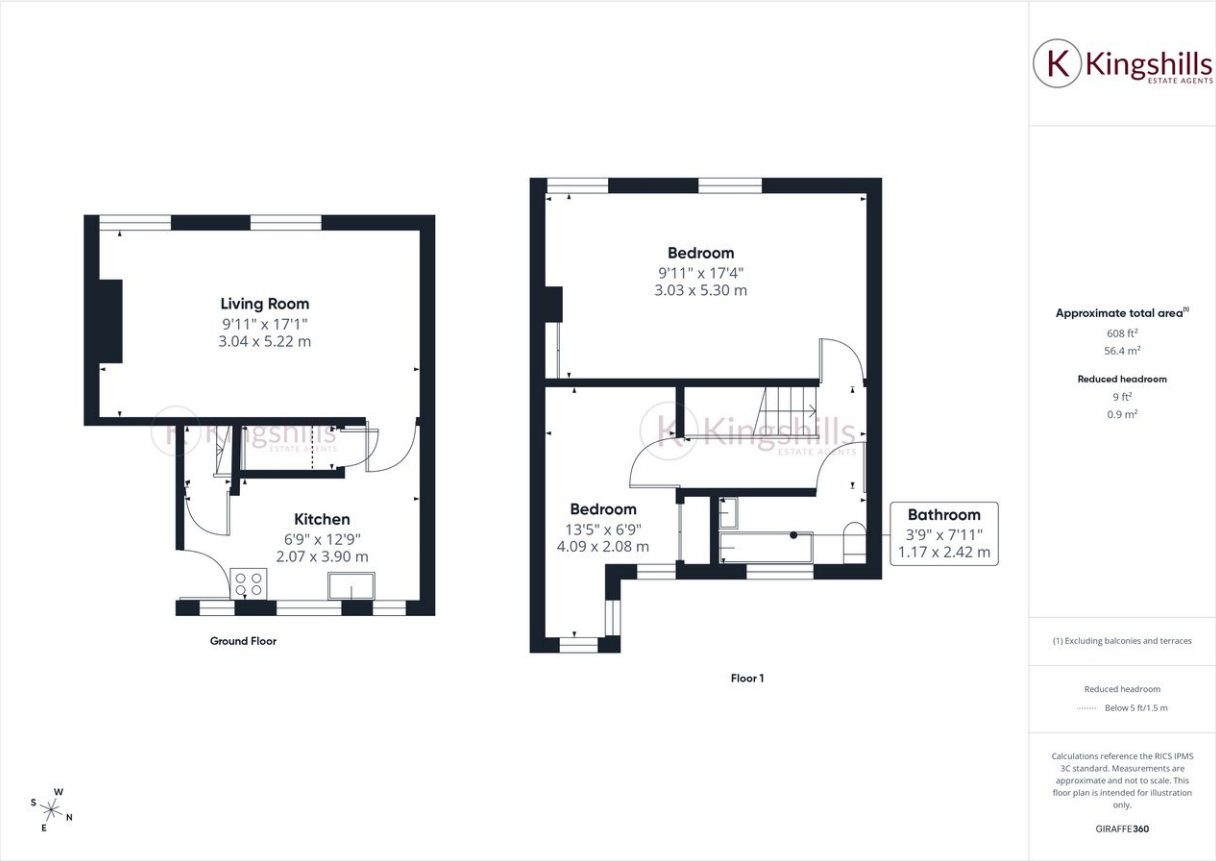
For commuters, Princes Risborough station is within easy reach and provides fast, direct rail services to London Marylebone, Oxford, and Birmingham. Local bus services connect the town to neighbouring villages and larger hubs, while nearby road links include the A4010 and easy access to the M40.

The apartment includes use of a delightful, shared rooftop terrace—a peaceful spot to unwind outdoors while still being at the centre of town.

Available from mid-December and offered unfurnished.

COUNCIL TAX C

EPC RATING C



Kingshills Estate Agents
Comet Studios
Amersham
Buckinghamshire
HP7 0PX

01494 939868
hello@kingshills.co.uk
kingshills.co.uk

Agents Note: Whilst every care has been taken to prepare these particulars, they are for guidance purposes only. All measurements are for general guidance purposes only and whilst every care has been taken to ensure accuracy, they should not be relied upon and potential buyers/tenants are advised to recheck the measurements