



Property Features

- Semi Detached
- Three Bedrooms
- Cul-De-Sac Location
- Modern Interior
- Kitchen With Fitted Appliances
- En-Suite to Bedroom 1
- Garden
- Garage and parking
- Available Now
- Unfurnished

Full Description

A well-presented three-bedroom home in a desirable cul-de-sac, offering a spacious living room, modern kitchen, en-suite to the main bedroom, and a family bathroom.

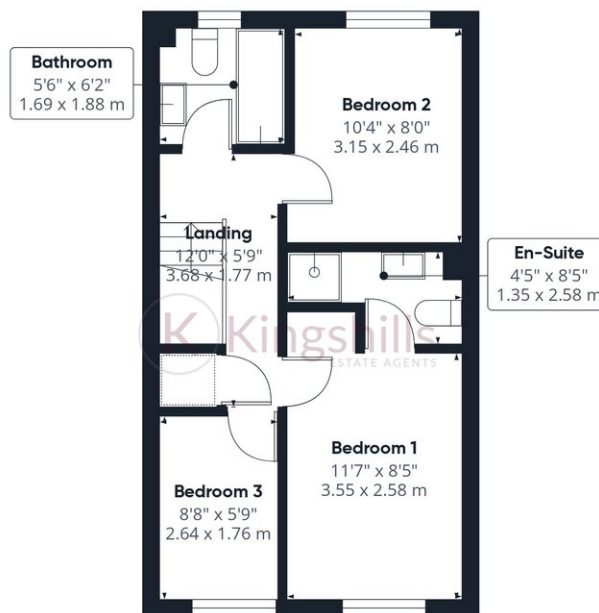
Outside, the property benefits from a private garden, garage, and allocated parking. Conveniently located with excellent access to the town centre. Available now on an unfurnished basis.







Ground Floor



Floor 1

Approximate total area⁽¹⁾
759 ft²
70.6 m²

(1) Excluding balconies and terraces

Calculations reference the RICS IPMS 3C standard. Measurements are approximate and not to scale. This floor plan is intended for illustration only.

GIRAFFE360