



Property Features

- Prices from £1800-1900pcm
- Nine 2-Bedroom 2-Bathroom Brand New Apartments
- High-Spec Finishes Throughout
- Integrated Kitchen Appliances
- Air Conditioning (Heating & Cooling)
- Private balcony with Every Apartment
- Allocated Parking with EV Charging
- Walking Distance to The Rye, Town centre and Train Station
- Lift Access to All Floors
- Available Mid-June

Full Description

Introducing an exclusive collection of nine brand-new 2-bedroom, 2-bathroom apartments, perfectly positioned on London Road in the heart of High Wycombe. Each apartment has been thoughtfully designed and finished to an exceptional standard, offering modern, stylish living with every convenience.

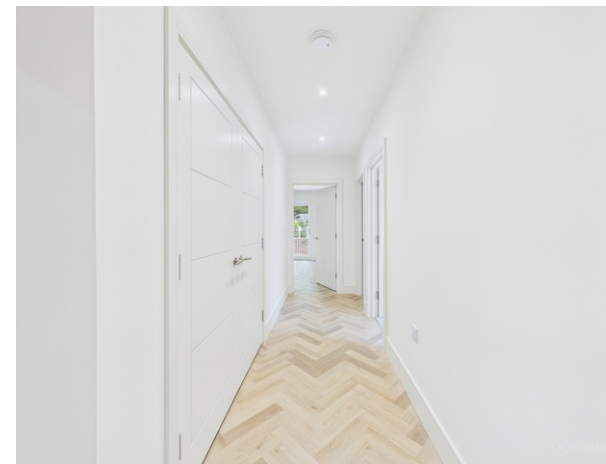
These high-specification homes feature open-plan living spaces, integrated kitchen appliances including washer/dryer, fridge/freezer and dishwasher, double bedrooms and contemporary bathrooms. All apartments are equipped with advanced air conditioning systems for both heating and cooling, ensuring year-round comfort. Each apartment also benefits from its own private balcony – ideal for relaxing or entertaining.

The development includes a lift to all floors, providing easy access to every apartment – a practical and convenient feature for all residents.

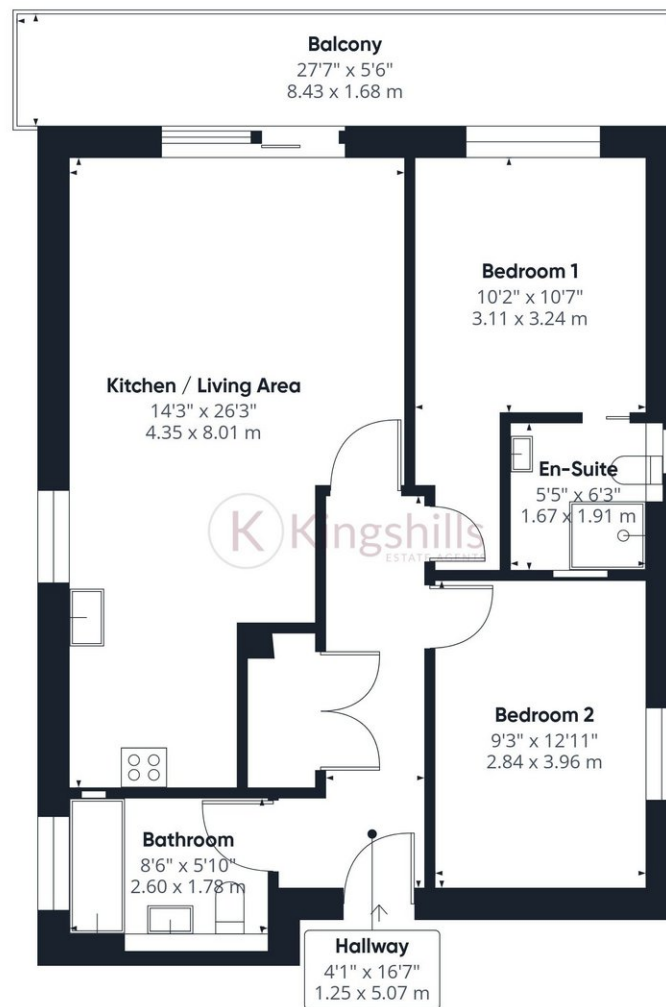
Situated just a short walk from The Rye, High Wycombe's beautiful parkland, residents have easy access to a gym, open-air swimming pool, café, and extensive green space.

Residents will enjoy secure off-street parking with electric vehicle charging points, supporting a modern and sustainable lifestyle. The town centre and High Wycombe train station are also within walking distance, providing fast and direct links to London Marylebone, making this development perfect for commuters and professionals alike.

Don't miss the chance to call this extraordinary high-specification apartment your home!







(1) Excluding balconies and terraces

Calculations reference the RICS IPMS 3C standard. Measurements are approximate and not to scale. This floor plan is intended for illustration only.

GIRAFFE360