



Property Features

- GROUND FLOOR APARTMENT
- 2 BEDROOMS
- RECENTLY REDECORATED
- CONVENIENT LOCATION
- NO ONWARD CHAIN
- EPC D 62 / COUNCIL TAX BAND D

Full Description

A much improved, spacious and conveniently located ground floor apartment with 2 bedrooms. Situated in a convenient, level location close to Marlow town centre, Offered with No Onward Chain.

The Property

A well presented ground floor apartment recently redecorated and comprises of an entrance hall, sitting/dining room, modern kitchen/breakfast room with ample storage, 2 bedrooms and a bathroom. The apartment is situated within a short level walk of Marlow High Street and local amenities and includes residents parking.

Tenure:

Leasehold with approximately 102 years remaining as June 25.

Details of Ground Rent and Service Charge available on request.

Marlow:

Marlow's vibrant High Street and excellent local schools. Marlow boasts an excellent selection of local and national retailers, as well as an array of bars, cafes, and renowned restaurants. Marlow is nestled along the banks of the River Thames.

Marlow is surrounded by the stunning countryside of the Chiltern Hills, offering a range of activities including golf, football, cricket, and rugby.

Transport Links:

By rail, Marlow station provides connections to London Paddington via Maidenhead.

BY Road there is easy access to the M40 and M4 motorways via the A404(M), facilitating convenient commutes to London and surrounding areas.





Primrose Lea

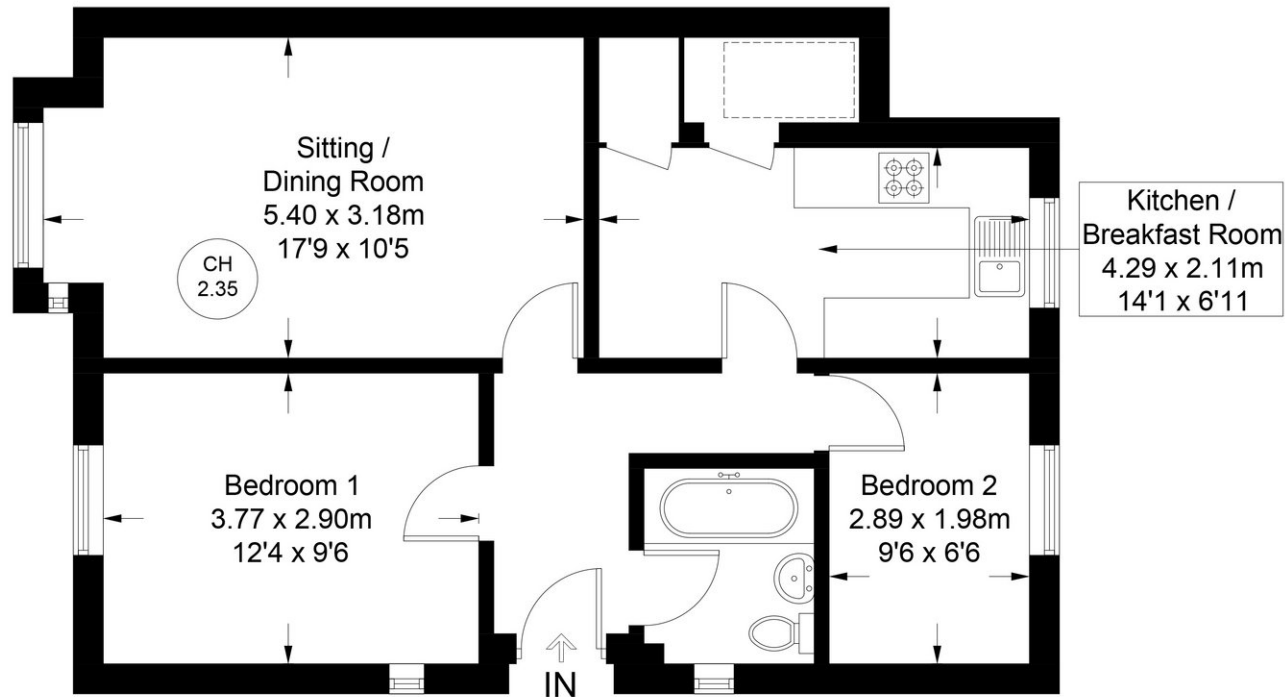
Approximate Gross Internal Area = 56.6 sq m / 609 sq ft



= Reduced headroom below 1.5m / 5'0



= Ceiling Height



Ground Floor

Floor Plan produced for Kingshills by Media Arcade ©.

Illustration for identification purposes only. Window and door openings are approximate. Whilst every attempt is made to assure accuracy in the preparation of this plan, please check all dimensions, shapes and compass bearings before making any decisions reliant upon them.

Kingshills Estate Agents
Covering Marlow
Bourne End, Maidenhead
& Surrounds

01628 561222
davidandsusan@kingshills.co.uk
kingshills.co.uk

Agents Note: Whilst every care has been taken to prepare these particulars, they are for guidance purposes only. All measurements are for general guidance purposes only and whilst every care has been taken to ensure accuracy, they should not be relied upon and potential buyers/tenants are advised to recheck the measurements