



Flat 8, 141 London Road, High Wycombe, Buckinghamshire, HP11 1BT

Asking Price | £1,850 per calendar month

Property Features

- Nine 2-Bedroom 2-Bathroom Brand New Apartments
- High-Spec Finishes Throughout
- Integrated Kitchen Appliances
- Air Conditioning (Heating & Cooling)
- Private balcony with Every Apartment
- Allocated Parking with EV Charging
- Prime Location
- Walking Distance to The Rye, Town centre and Train Station
- Lift Access to All Floors
- Available Mid-June

Full Description

Introducing an exclusive collection of nine brand-new 2-bedroom, 2-bathroom apartments, perfectly positioned on London Road in the heart of High Wycombe. Each apartment has been thoughtfully designed and finished to an exceptional standard, offering modern, stylish living with every convenience.

These high-specification homes feature open-plan living spaces, integrated kitchen appliances including washer/dryer, fridge/freezer and dishwasher, double bedrooms and contemporary bathrooms. All apartments are equipped with advanced air conditioning systems for both heating and cooling, ensuring year-round comfort. Each apartment also benefits from its own private balcony – ideal for relaxing or entertaining.

The development includes a lift to all floors, providing easy access to every apartment – a practical and convenient feature for all residents.

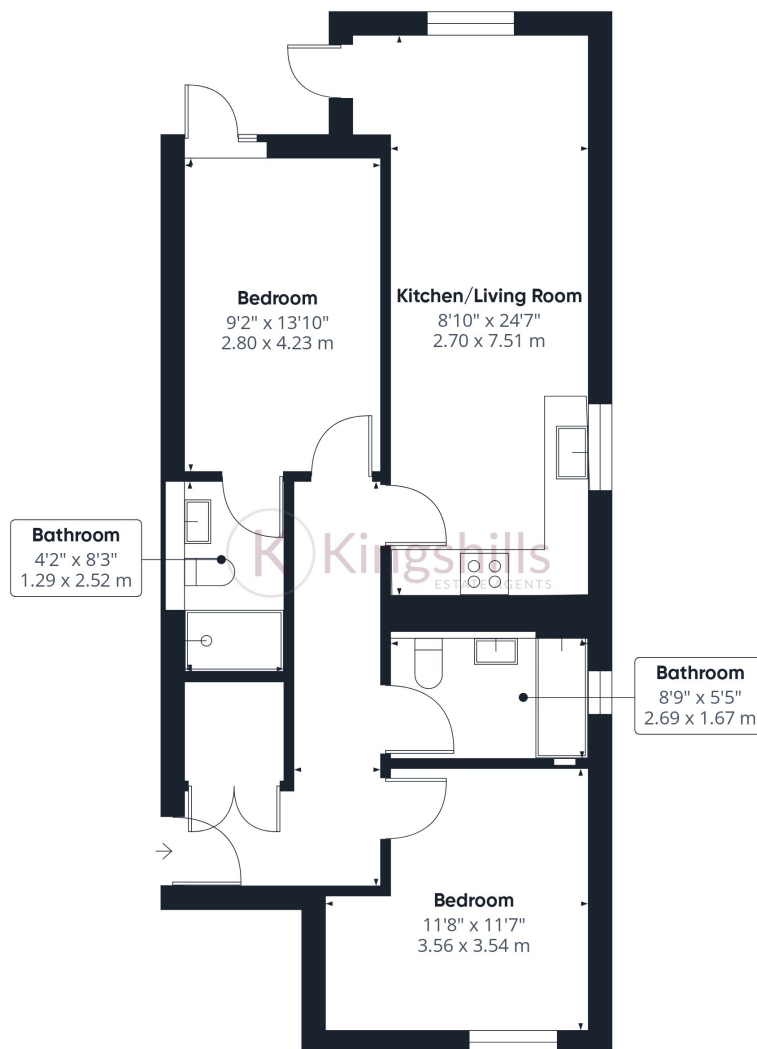
Residents will enjoy secure off-street parking with electric vehicle charging points, supporting a modern and sustainable lifestyle.

Situated just a short walk from The Rye, High Wycombe's beautiful parkland, residents have easy access to a gym, open-air swimming pool, café, and extensive green space. The town centre and High Wycombe train station are also within walking distance, providing fast and direct links to London Marylebone, making this development perfect for commuters and professionals alike.

Don't miss the chance to call this extraordinary high-specification apartment your home!







While every attempt has been made to ensure accuracy, all measurements are approximate, not to scale. This floor plan is for illustrative purposes only.

Calculations were based on RICS IPMS 3C standard. Please note that calculations were adjusted by a third party and therefore may not comply with RICS IPMS 3C.

GIRAFFE360