

Property Features

- 5 beds plus loft room
- Quiet sought after location
- Garage with parking space
- Easy access to transport links
- Secluded garden
- Close to St Pauls School

Full Description

An extended end terrace 5 bedroom family home in this quiet cul de sac location within a few minute walk of St Pauls School. This incredibly versatile home offers flexibility for family life in a sought after location close to open countryside and local amenities.

Ground Floor

Hallway, fitted kitchen, sitting room, dining room, utility, bedroom 5.

First & Second Floors

Master bedroom with dressing room and en-suite shower room, 3 further bedrooms, family bathroom, loft room currently used as a bedroom

Outside

Large secluded garden, garage in block with designated parking space.

Location

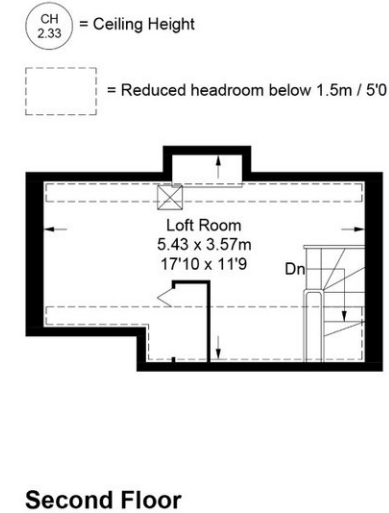
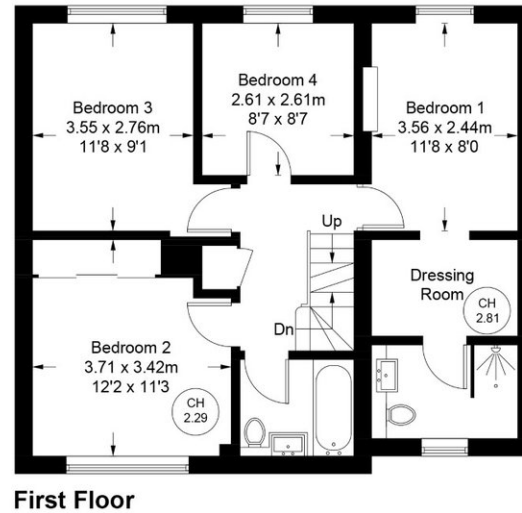
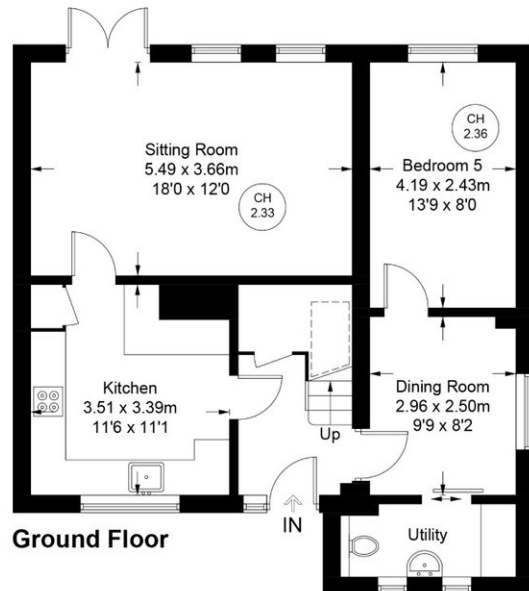
Situated just outside the village of Wooburn Green a picturesque village with its traditional village green and very close to Bourne End which is set on the River Thames. In the catchment for Buckinghamshire's prestigious grammar schools and within easy reach of the M40, M4, Beaconsfield and Bourne End train stations are close by with direct links into London.





Gilbey Walk

Approximate Gross Internal Area
 Ground Floor = 66.0 sq m / 710 sq ft
 First Floor = 60.7 sq m / 653 sq ft
 Second Floor = 16.5 sq m / 178 sq ft
 Total = 143.2 sq m / 1541 sq ft



CH 2.33 = Ceiling Height

— = Reduced headroom below 1.5m / 5'0

Floor Plan produced for Kingshills by Media Arcade ©.

Illustration for identification purposes only. Window and door openings are approximate. Whilst every attempt is made to assure accuracy in the preparation of this plan, please check all dimensions, shapes and compass bearings before making any decisions reliant upon them.

Kingshills Estate Agents
 Covering Marlow
 Bourne End, Maidenhead
 & Surrounds

01628 561222
davidandsusan@kingshills.co.uk
kingshills.co.uk

Agents Note: Whilst every care has been taken to prepare these particulars, they are for guidance purposes only. All measurements are for general guidance purposes only and whilst every care has been taken to ensure accuracy, they should not be relied upon and potential buyers/tenants are advised to recheck the measurements