

Property Features

- 4 bedrooms
- Self contained annex
- High specification throughout
- Flexible family accommodation
- Short walk to high street & schools
- Off street parking for three cars

Full Description

A beautifully presented 4 bedroom family home with a self contained annex, garden room/office and off street parking for three cars. Situated in a quiet cul de sac within a short walk of Marlow town centre, the River Thames and local transport links.

Ground floor:

Entrance hall, cloakroom, sitting room, kitchen/dining room with doors onto garden, utility. The one bed annex has its own kitchen and sitting room also opening onto the garden.

First and second floors:

Three double bedrooms one with ensuite shower room and a lovely family bathroom

Location & Amenities:

Trinity Avenue is situated within a short walk of Marlow's vibrant High Street and excellent local schools. Marlow boasts an excellent selection of local and national retailers, as well as an array of bars, cafes, and renowned restaurants. Marlow is nestled along the banks of the River Thames.

Marlow is surrounded by the stunning countryside of the Chiltern Hills, offering a range of activities including golf, football, cricket, and rugby.

Transport Links:

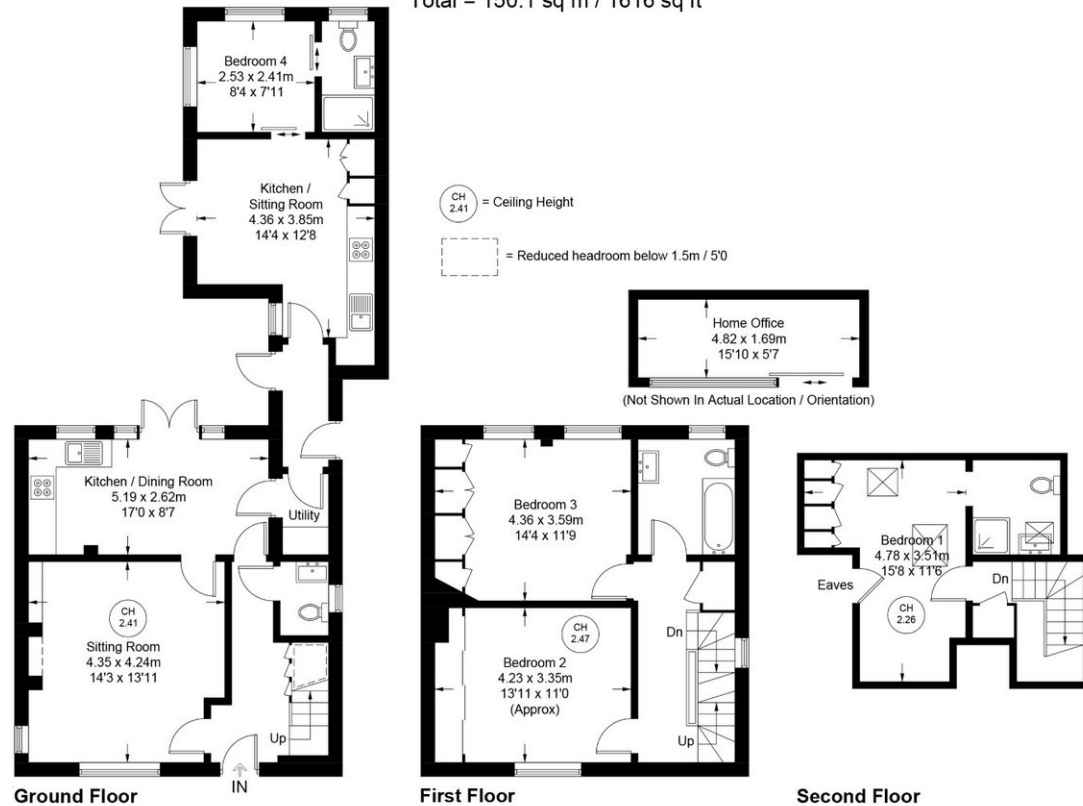
Rail: Marlow station provides connections to London Paddington via Maidenhead. Road: Easy access to the M40 and M4 motorways via the A404(M), facilitating convenient commutes to London and surrounding areas.





Trinity Avenue

Approximate Gross Internal Area
 Ground Floor = 73.3 sq m / 789 sq ft
 First Floor = 45.5 sq m / 490 sq ft
 Second Floor = 23.1sq m / 249 sq ft
 Outbuilding = 8.2 sq m / 88 sq ft
 Total = 150.1 sq m / 1616 sq ft



Floor Plan produced for Kingshills by Media Arcade ©.

Illustration for identification purposes only. Window and door openings are approximate. Whilst every attempt is made to assure accuracy in the preparation of this plan, please check all dimensions, shapes and compass bearings before making any decisions reliant upon them.

Kingshills Estate Agents
 Covering Marlow
 Bourne End, Maidenhead
 & Surrounds

01628 561222
 davidandsusan@kingshills.co.uk
 kingshills.co.uk

Agents Note: Whilst every care has been taken to prepare these particulars, they are for guidance purposes only. All measurements are for general guidance purposes only and whilst every care has been taken to ensure accuracy, they should not be relied upon and potential buyers/tenants are advised to recheck the measurements