



24 Thistle Walk, High Wycombe, Buckinghamshire, HP11 1GZ

Asking Price | £325,000

## Property Features

---

- Stunning Ground Floor Apartment
- Overlooking the Swale
- 2 Bedrooms
- Principal Bedroom with Ensuite
- Open Plan Living Room/Dining/Kitchen
- Popular Wye Dene Development
- Kitchen with Fitted Appliances
- Outside Seating Area
- Allocated Parking
- EPC Rating B / Council Tax Band C

## Full Description

---

Welcome to this beautifully presented ground floor apartment on the popular Wye Dene development that was constructed by Berkeley Homes in 2014. Boasting two generously sized bedrooms, including a principal bedroom with its own en suite bathroom this residence caters to the needs of modern families and professionals alike. This particular location of property rarely becomes available as it overlooks the Swale.

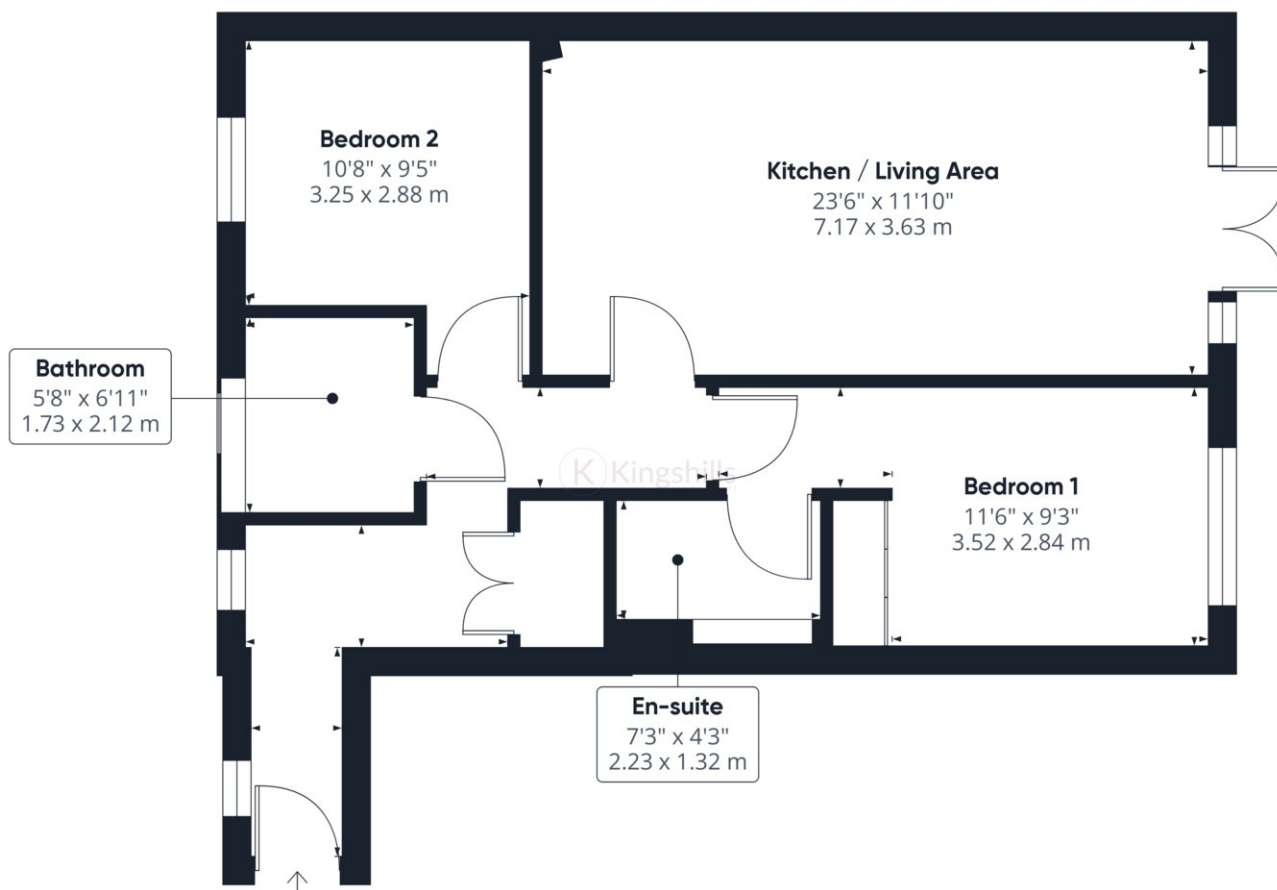
Upon entering the property, you are greeted by a spacious hallway adorned with tasteful décor and illuminated by natural light streaming through the windows. A notable feature of the hallway is the ample storage cupboard, providing convenient space for storing belongings and maintaining an organized living environment. There are 2 bedrooms, the principal bedroom has a luxurious shower room for relaxing and unwinding. There is a family bathroom which has also been finished to a high specification with luxury fixtures, fittings and modern tiling.

The heart of the home lies in the expansive open-plan kitchen, living, and dining area. Designed to create a sense of togetherness and connectivity, this versatile space serves as the hub for family gatherings and entertaining guests. The kitchen is equipped with modern appliances, sleek countertops, and ample storage solutions, catering to the needs of all levels of culinary enthusiasts and home chefs.

One of the highlights of this residence is the seamless integration of indoor and outdoor living spaces. French doors adorn the living area, leading out to a private patio area. This outdoor oasis offers an ideal setting for alfresco dining, relaxation, and enjoying the picturesque surroundings of the property which overlooks the Swale. There is also allocated parking.







Approximate total area<sup>(1)</sup>  
743.56 ft<sup>2</sup>  
69.08 m<sup>2</sup>

(1) Excluding balconies and terraces

While every attempt has been made to ensure accuracy, all measurements are approximate, not to scale. This floor plan is for illustrative purposes only.

GIRAFFE360