



Flat 4, Sands House, 65-67 Chapel Lane, High Wycombe, Buckinghamshire,
HP12 4DG

Asking Price | £1,900

Property Features

- Brand New Apartments
- Flat 4 Located at the back of the Development
- 2 Bedrooms
- Ensuite Cloakroom
- Open Plan Kitchen/Living Room
- Large Balcony
- EV Charging
- Allocated Parking
- Unfurnished
- Available 5th August

An exclusive collection of six brand new apartments meticulously crafted by the reputable developer, Barar Homes. Each apartment boasts a unique design and is outfitted with premium features to ensure a luxurious and comfortable living experience.

Kitchens - Modern Design: Handleless cabinetry for a sleek, contemporary look.

High-End Appliances: Fully integrated Bosch appliances for top-notch functionality and style.

Bathrooms - Sophisticated Aesthetic: Fully tiled with large format rectified concrete effect porcelain tiles for a clean, modern finish.

Heating & Cooling - Efficient System: Daikin air source heat pump provides both heating and cooling, ensuring year-round comfort and energy efficiency.

Hot Water - Advanced Technology: Ariston Nuos air source heat pump cylinders with WiFi connectivity for smart and efficient hot water management.

Flooring - Stylish and Durable: Porcelain concrete effect tiling throughout living rooms, kitchen areas, and hallways.

Comfortable Bedrooms: Plush carpeting in all bedrooms for added comfort and warmth.

Ventilation - Cutting-Edge System: Intelligent Passive Stack Ventilation (PSV) for continuous, natural background ventilation.

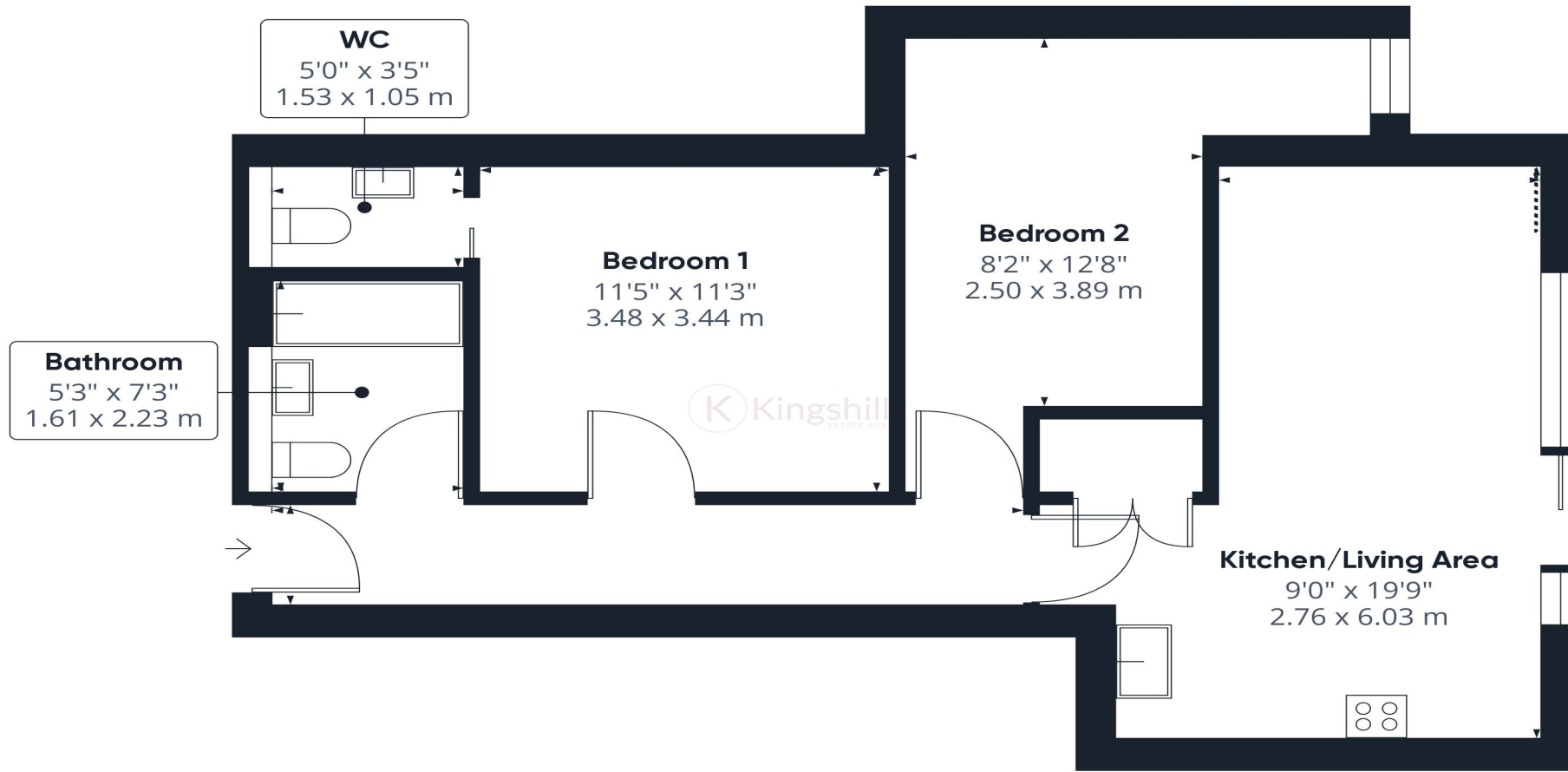
Sustainable: The most energy-efficient ventilation system available, requiring no electricity and ensuring reduced electrical load requirements.

EV Charging - Smart and Convenient: Each flat includes a 7kW charger with smart functionality, ensuring residents can easily charge their electric vehicles.

Parking - Allocated Spaces: Each apartment comes with one dedicated off-street parking bay, along with three additional visitor bays.







(1) Excluding balconies and terraces

 Reduced headroom
(below 1.5m/4.92ft)

While every attempt has been made to ensure accuracy, all measurements are approximate, not to scale. This floor plan is for illustrative purposes only.

GIRAFFE360