



16 Sandsdown Close, High Wycombe, Buckinghamshire, HP12 4FA



Asking Price | £2,250

Property Features

- Brand New Three Bedroom House
- Detached
- High Specification
- Modern Kitchen with Integrated Appliances
- Eco-Friendly
- En-Suite to Principal Bedroom
- Downstairs WC
- Rear Garden
- Unfurnished
- Available Now

Full Description

An exclusive, brand-new detached house, meticulously crafted by the reputable developer, Barar Homes. This high-specification three-bedroom home is fitted with premium features to ensure a luxurious and comfortable living experience.

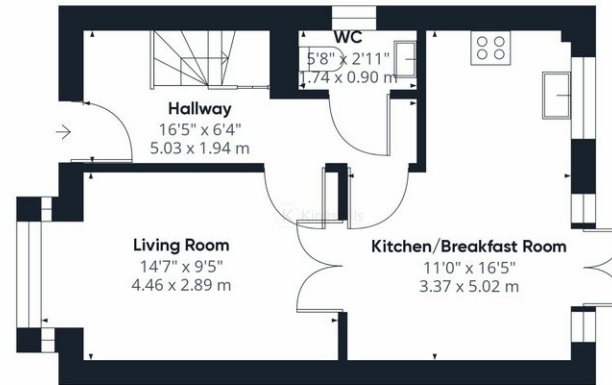
On the ground floor you will find the modern kitchen with fitted high-end appliances including a washing machine and dishwasher. The kitchen is open plan to the dining area and has doors out to the rear garden, making this the perfect space for entertaining. The dining area has double doors to the main living space. Downstairs also has the added benefit of a WC.

The first floor offers the high specification family bathroom, principal bedroom with en-suite shower room and a further bedroom with fitted wardrobes. On the second floor you will find bedroom 3 complete with fitted storage.

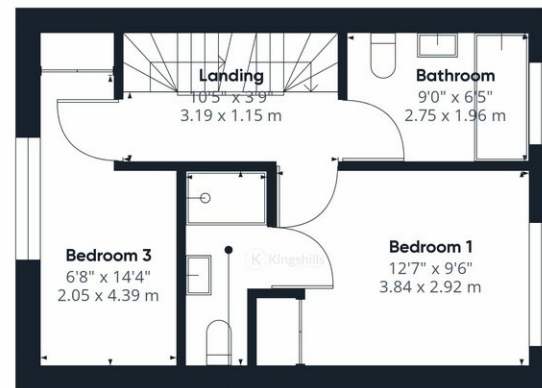
This SIPs home has been completed to an extremely high standard and benefits from a Worcester Bosch Greenstar series combi boiler, alongside passive stack 'intelligent' ventilation throughout for a continuous supply of fresh air. The property also benefits from the installation of 9 solar panels offering a significant saving towards household electricity bills. A rated for both energy efficiency and environmental impact, this is a well thought out and meticulously crafted new home.



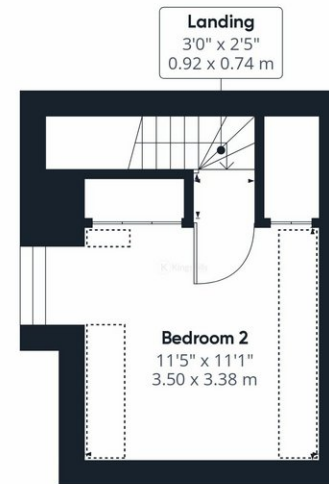




Ground Floor



Floor 1



Floor 2

Approximate total area⁽¹⁾
937.75 ft²
87.12 m²

Reduced headroom
34.5 ft²
3.21 m²

(1) Excluding balconies and terraces

☒ Reduced headroom
(below 1.5m/4.92ft)

While every attempt has been made to ensure accuracy, all measurements are approximate, not to scale. This floor plan is for illustrative purposes only.

GIRAFFE360