



Property Features

- Four Bedroom Family Home
- Two Bathrooms
- Home Office
- Stunning Kitchen / Diner
- Rear Garden
- Driveway Parking
- Available Early September
- Sought After Location
- EPC Rating C
- Council Tax Band E

Full Description

A delightful and thoughtfully extended 4-bedroom semi-detached home nestled in the charming village of Penn & Tylers Green, available to rent from early September. This property is within the catchment area of highly regarded schools, making it an excellent choice for families. The property is also conveniently located near the train stations of High Wycombe, Beaconsfield, and Amersham, offering easy access to London and beyond.

When you enter the property you are greeted by the light and airy entrance, which leads to the home office and living room, where you can enjoy the log burner. The living room leads to the stunning kitchen/diner, which truly is the heart of the home. The ground floor also offers a utility room and downstairs WC.

On the first floor you will find three double bedrooms and the family bathroom. On the second floor is the spacious principal bedroom, which has the benefit of a modern en-suite shower room.

Externally you will find a low maintenance rear garden, and driveway parking to the front for 2/3 cars.

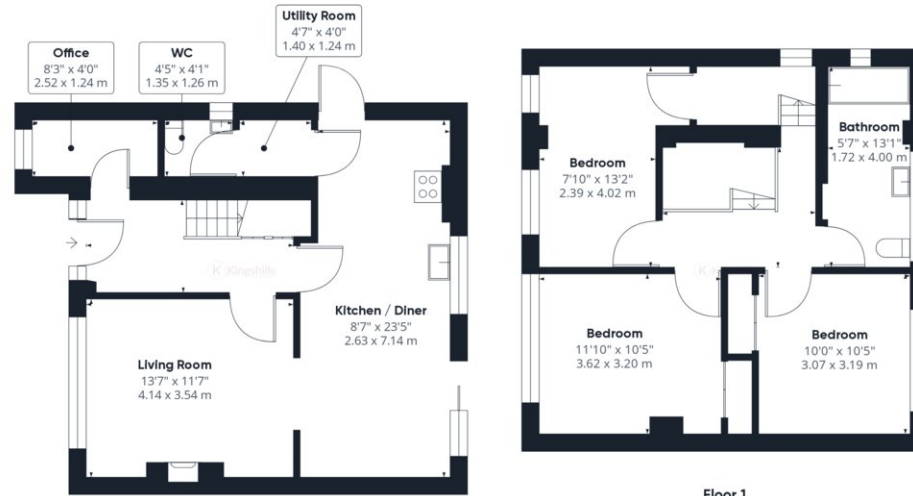
Situated just 10 minutes' drive from Beaconsfield, Penn is consistently popular with commuting couples and families, but this beautiful village offers far more than just convenience. Penn is renowned locally as a village of prestige properties, great primary schools and traditional village pubs and woodland. Providing that idyllic Chiltern village lifestyle, but within a short drive of High Wycombe with its wide range of shops and amenities. The area also offers superb walks through open countryside and designated ancient woodland.





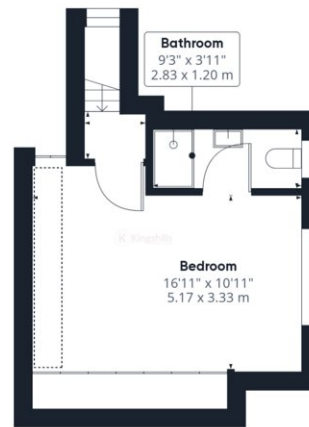






Ground Floor

Floor 1



Floor 2

Approximate total area^m

1356.35 ft²
126.01 m²

Reduced headroom

25.12 ft²
2.33 m²

(1) Excluding balconies and terraces

⌊ Reduced headroom
(below 1.5m/4.92ft)

While every attempt has been made to ensure accuracy, all measurements are approximate, not to scale. This floor plan is for illustrative purposes only.

GIRAFFE360